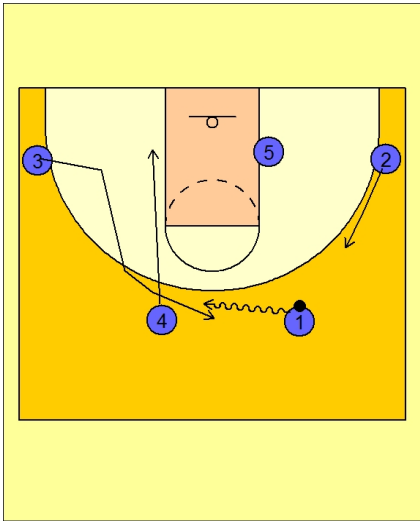




Set play (23)

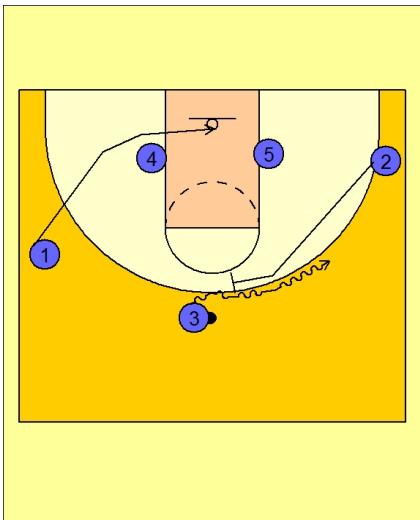


Duke Set Play vs. Man Defense

#4 cuts to the left low block.

#1 drives the ball across the top and executes a dribble hand-off with #3.

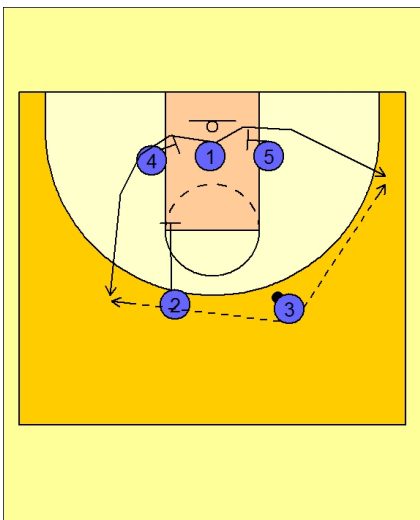
#2 starts to slide up on the right wing area.



Duke Set Play vs. Man Defense

#3 takes the hand-off and uses a ball screen from #2.

As this is happening, #1 cuts under the rim.



Duke Set Play vs. Man Defense

#1 now has the option to cut off the single screen from #5 to the right corner OR he can use the double staggered screen from #4 and #2 for the shot on top of the left side of the floor.