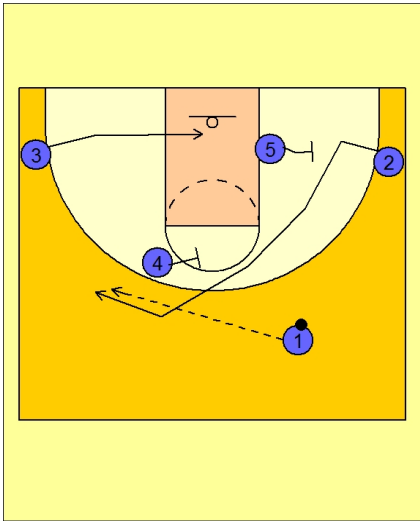




Set play (25)



Duke Set Play vs. Man Defense

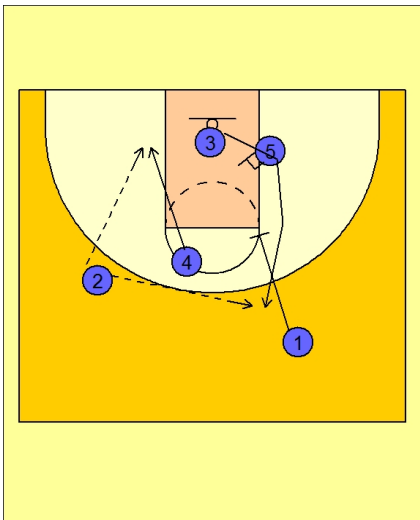
#1 has the ball on the right top side of the floor.

The play starts with #5 stepping out to screen for #2.

#2 uses a screen from #5 and #4 in the middle of the FT line area.

#3 cuts under the rim.

#1 passes to #2 on the left top side of the floor.



Duke Set Play vs. Man Defense

#4 rolls to the basket while #3 comes off a double staggered down screen from #5 and #1.