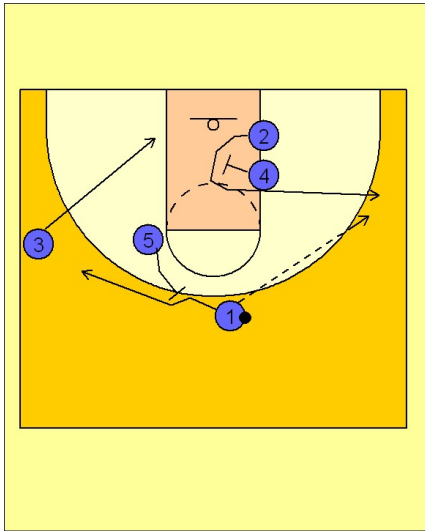


Duke

Set play (1)

1



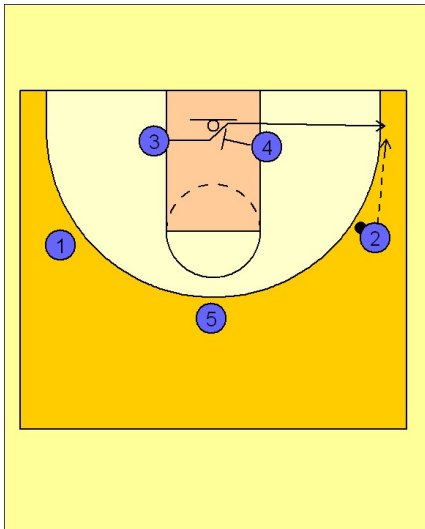
Duke Set Play

(#4) sets a screen for (#2) to get open for the entry pass to the wing.

After (#1) enters the ball to (#2), (#3) clears down to the opposite block.

(#1) then receives a back screen from (#5) and fades to the opposite wing.

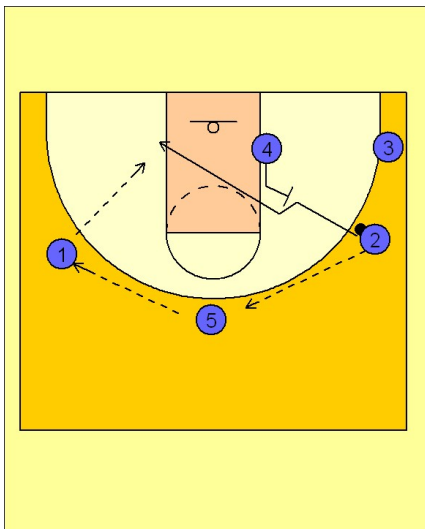
2



Duke Set Play

(#4) then sets a screen for (#3) popping to the ball side corner for the potential jump shot.

3



Duke Set Play

If the shot is not there for (#3), (#2) reverses the ball to (#5) at the top and then (#5) reverses the ball to (#1).

After (#2) passes the ball, he gets a back screen from (#4) and cuts to the ball side block looking for the pass from (#1).

Duke Set play (1)

4

Duke Set Play

If the shot for (#2) is not there, (#4 and #5) are setting double or staggered screens for (#3) looking for the three point shot on top.

