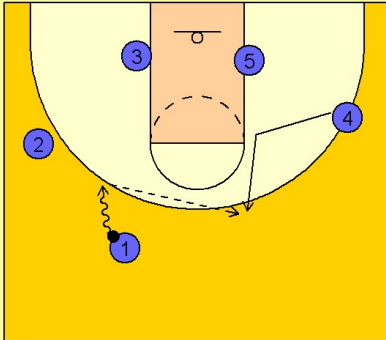


# Duke

## Set play (10)

1

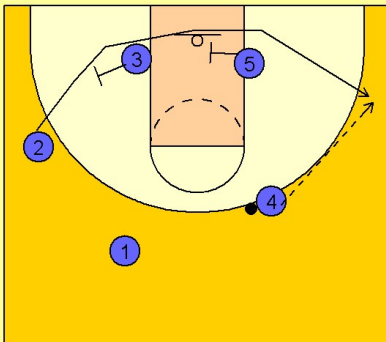
Duke Set Play vs. Man Defense



#1 dribbles up to the left side. #4 makes a good hard v-cut to receive the entry pass on the other side of the floor on top.

2

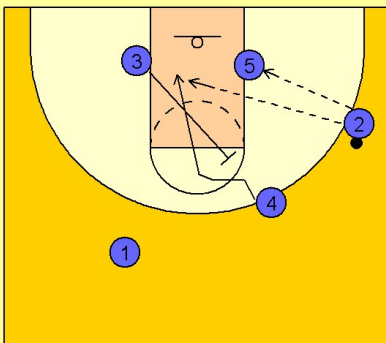
Duke Set Play vs. Man Defense



As soon as #4 receives the ball, #3 and #5 set screens along the baseline for the shooter #2. #4 looks to enter the ball to #2 on the right wing area.

3

Duke Set Play vs. Man Defense



Once #4 passes the ball to #2, #3 steps up and back screens #4. #2 looks inside to #5 or to #4 cutting to the basket.