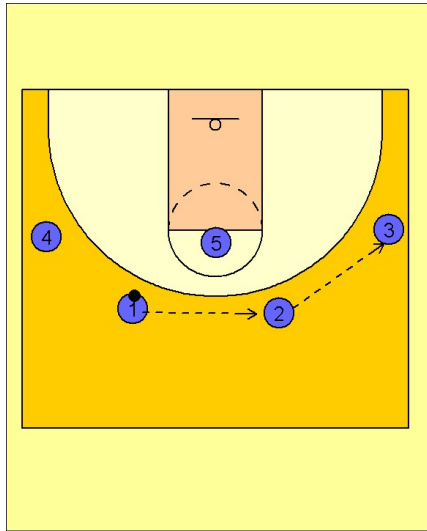


Duke Set play (11)

1

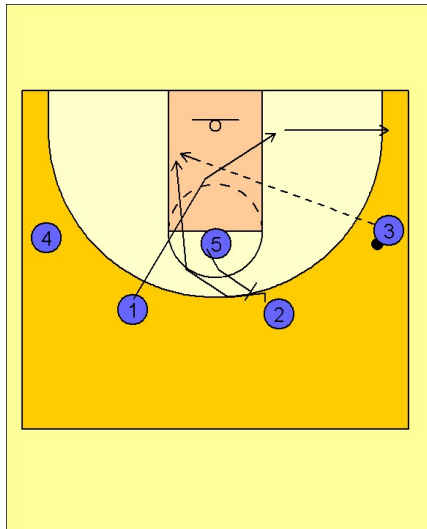


Duke Set Play vs. Man Defense

2 - 3 high set to begin.

#1 passes to #2 who passes to #3 on the right wing.

2

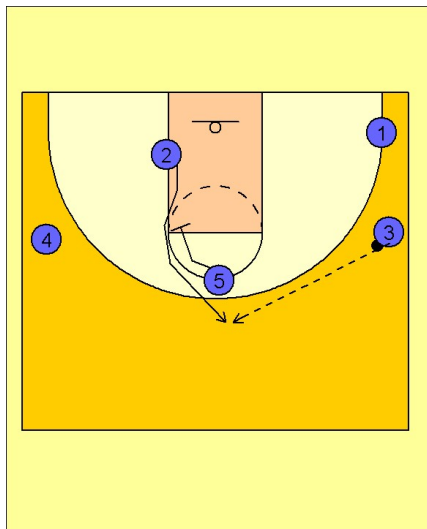


Duke Set Play vs. Man Defense

After passing, #1 cuts first down into the lane and out to the ballside corner area.

#2 follows and uses a backscreen from #5 and cuts into the lane looking for the pass from #3.

3



Duke Set Play vs. Man Defense

If #2 does not receive the ball, he quickly cuts back to the top using a downscreen from #5 and tries to get open at the top of the key for the shot.