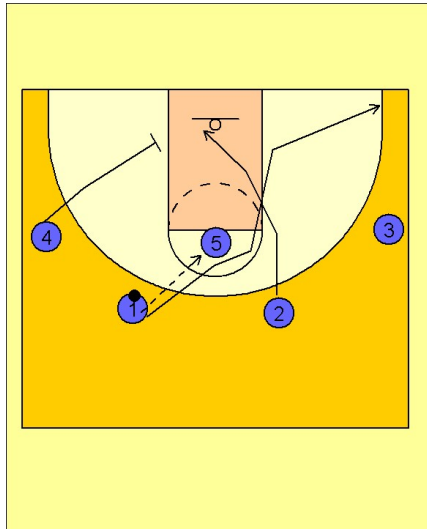


Duke

Set play (12)

1



Duke Set Play vs. Man Defense

2 - 3 high set to begin.

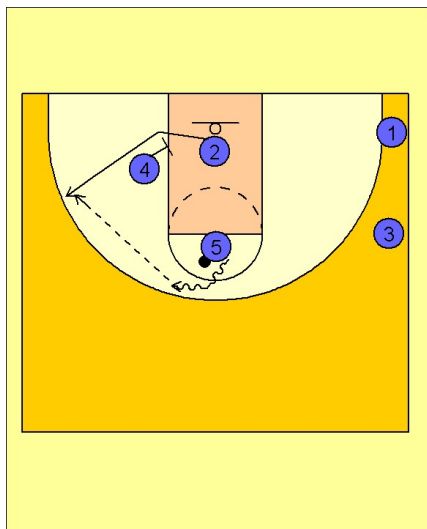
#1 passes to #5 in the post. On the pass, #2 cuts first down into the lane underneath the basket area.

#1 follows and will look to receive a handoff from #5 if he is open.

#4 starts to move down to the left low block area to set a screen.

#1 cuts through and out to the opposite corner area.

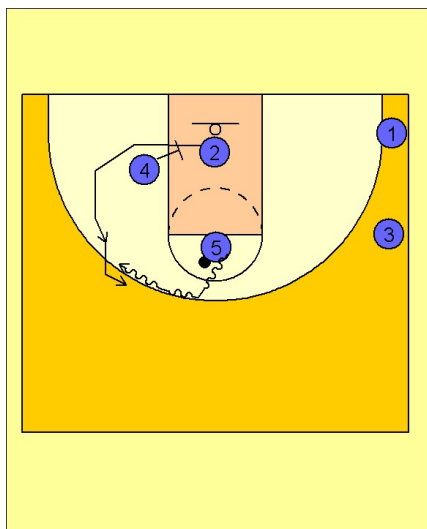
2



Duke Set Play vs. Man Defense

After #1 and #2 cut, #5 puts the ball on the floor to the left side while #2 comes off a downscreen from #4. #5 will look to hit #2 if he is open on the left wing area for the shot.

3



Duke Set Play vs. Man Defense

#2 also has the option to curl around the screen and come up to the top to receive a dribble handoff from #5.