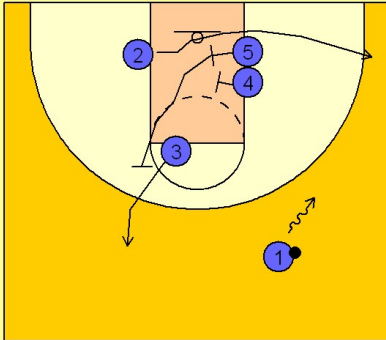


Duke

Set play (2)

1

Duke Set Play

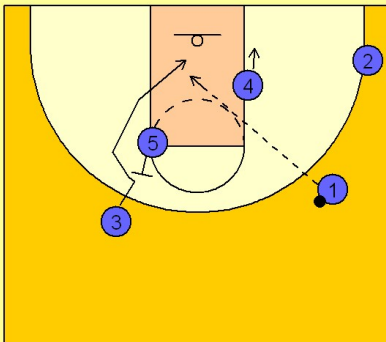


(#4) and (#5) set a double screen for (#2) popping to the ball side corner.

(#3) breaks to the top opposite the ball. (#5) slides up the lane after double screening with (#4) and prepares to set a back screen for (#3).

2

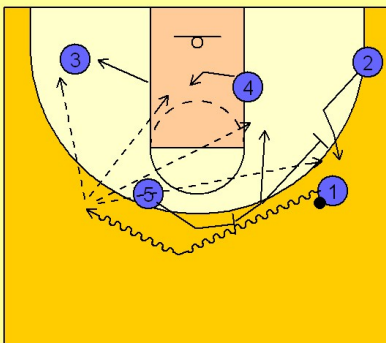
Duke Set Play



(#3) makes a good v-cut and goes hard to the basket off the back screen from (#5). (#4) looks for post position on the block.

3

Duke Set Play



If the pass to (#3) is not there, (#3) breaks out to the wing / corner area opposite the ball.

(#5) comes over to set a pick and roll with (#1).

(#1) takes it hard off the ball screen looking for dribble penetration for a lay-up or jumpshot, a drive and kick out opportunity with (#3), or he will look for (#4) posting up or (#5) rolling to the basket off of the screen.

(#5) may screen away on the perimeter for (#2) for the shot as well.