

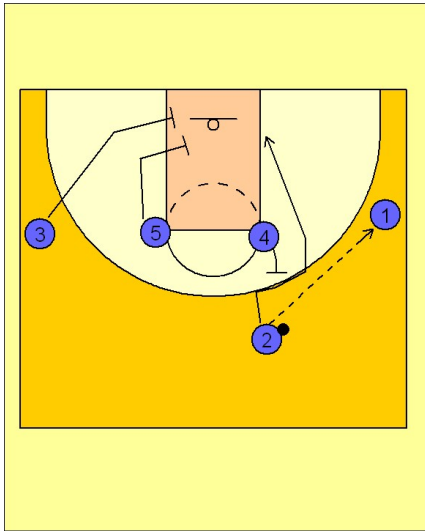
Duke

Set play (3)

1

Duke Set Play

1 - 4 high alignment. Shooter (#2) enters the ball to (#1). (#4) sets a back screen bringing to (#2) to the ball side block. (#3) and (#5) set up on the opposite block for the double screen.



2

Duke Set Play

(#4) steps out and sets a ball screen for (#1). (#1) comes off the ball screen looking for (#2) coming off the double screen on the opposite side of the floor.

After (#3) and (#5) screen, (#5) steps in and posts up in the paint while (#3) clears out to the other side, giving (#5) room to work in the post.

