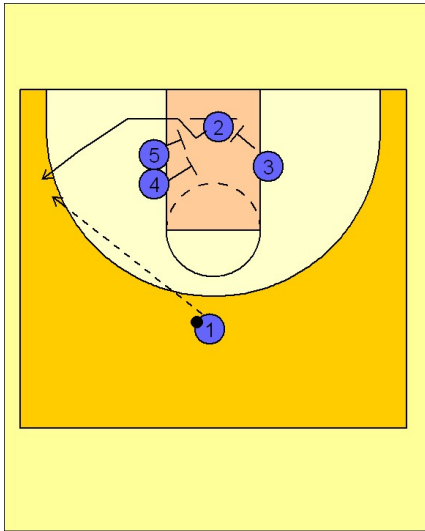


Duke

Set play (4)

1



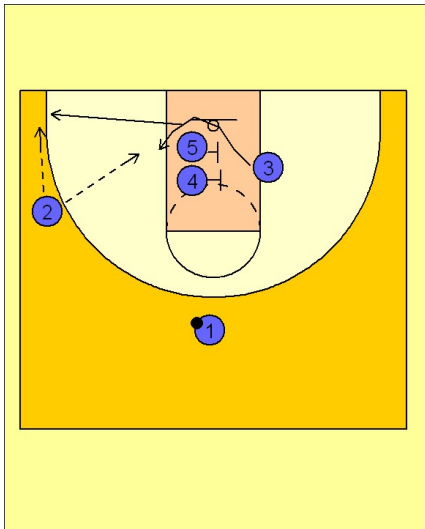
Duke Set Play

(#4) and (#5) set a double screen on the left side while (#3) sets a single screen on the right side.

(#2) starts in the middle and has the option to come off the double screen or the single screen.

If (#2) comes off the double screen, (#1) will enter the pass to (#2) for a shot opportunity.

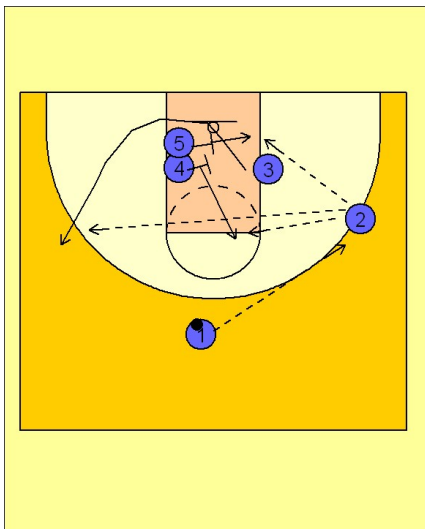
2



Duke Set Play

If the shot is not there, (#3) may use the double screen and break to the block or out to the ball side corner for the shot.

3



Duke Set Play

If (#2) uses the single screen and comes out to the right side, (#1) will enter the ball to (#1) for the shot.

If the shot is not there, (#3) may use the double screen from (#4) and (#5) and a skip pass and shot on the back side of the floor. (#5) will immediately post up after screening while (#4) will flash to the high post for a pass from (#2). They will run motion offense from here.