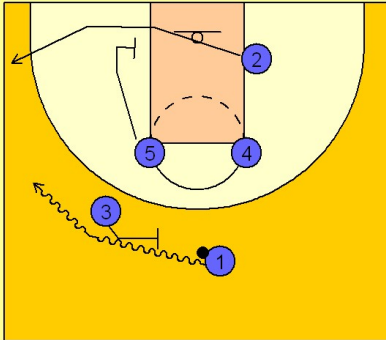


Duke

Set play (5)

1

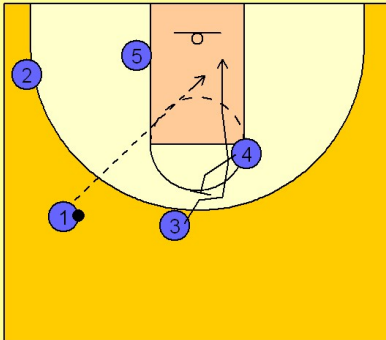
Duke Set Play



(#3) sets a ball screen for (#1) bringing the ball to the left side of the floor. (#5) slides down to the ball side block and sets a pick for (#2) coming to the corner. This is a great misdirection play as although (#2) is a good option to shoot the ball in the corner if he is open, they are really looking for more on this play.

2

Duke Set Play



If the shot to (#2) isn't there, (#4) slides up and sets a back screen on (#3's) defender sending him to the basket for the lob pass from (#1).

(#4) would then step out and receive the pass from (#1) if the lob was not open and they would run motion offense.