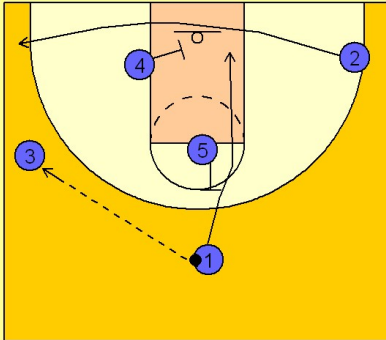


# Duke Set play (7)

1

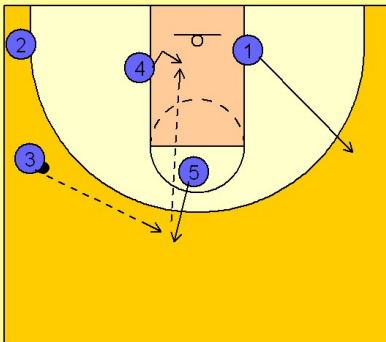
Duke Set Play vs. Man Defense



#1 enters to #3 on the left wing and cuts through the lane on a back screen from #5. #2 cuts to the ball side corner off of a screen from #4.

2

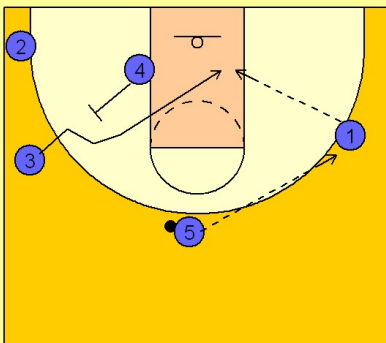
Duke Set Play vs. Man Defense



After screening for #1, #5 steps out to receive a pass from #3. #1 breaks out to the right wing area. #4 steps in and looks for the post entry pass from #5.

3

Duke Set Play vs. Man Defense



#5 reverses the ball to #1 on the right wing. #4 steps out and back screens for #3. #3 comes off the screen looking for the entry pass from #1 for the layup.

# Duke Set play (7)

4

Duke Set Play vs. Man Defense

If #3 is not open, #4 and #5 sets staggered screens for #2 to come off high looking for the perimeter jumper and the pass from #1.

