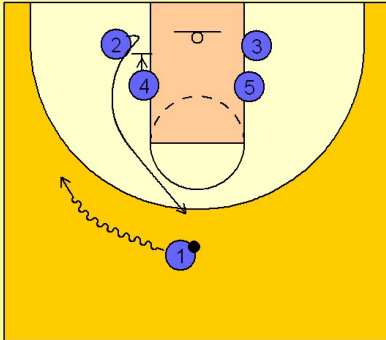


Duke Set play (8)

1

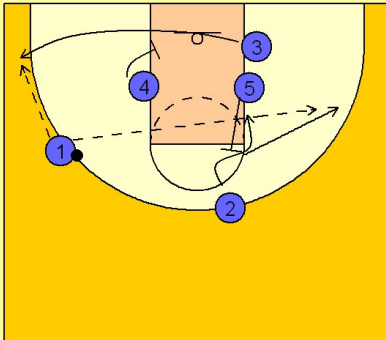
Duke Set Play vs. Man Defense



#1 takes the ball down to the left wing. #4 screens down for #2 who breaks up to the top of the key area.

2

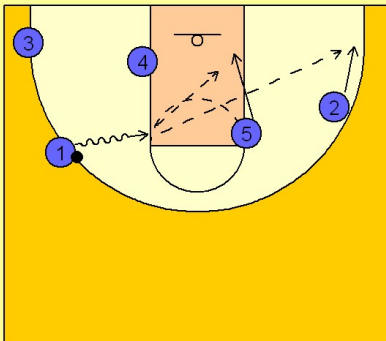
Duke Set Play vs. Man Defense



When #1 gets to the left wing #3 cuts across using a screen on the left block from #4 trying to get open for a jumper in the left corner area. #5 is also back screening for #2 on the other side. #2 can use the screen and attack the basket for the lob or he can fade to the back side wing for the skip pass from #1. #5 will roll to the basket or pop out depending upon how the back screen is defended.

3

Duke Set Play vs. Man Defense



#1 also has the option to put the ball on the floor in the gap looking to score or drive and kick.