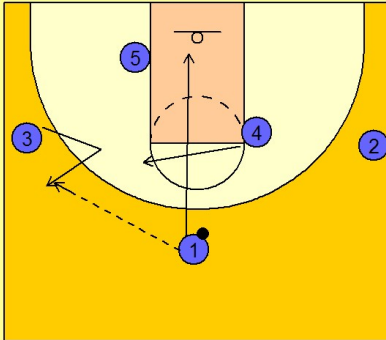


# Duke Set play (9)

1

## Duke Set Play vs. Man Defense

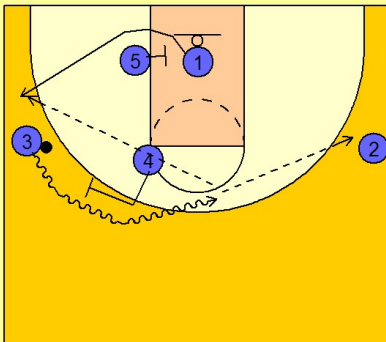


#1 enters to #3 on the left wing and cuts down the middle to underneath the basket.

#4 flashes to the ft line left elbow.

2

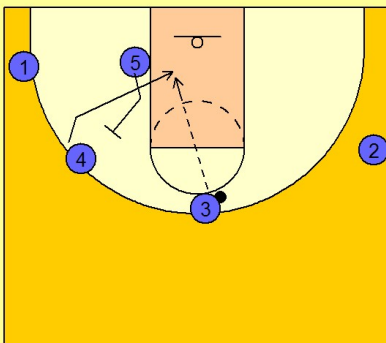
## Duke Set Play vs. Man Defense



Once #3 has the ball on the left wing, #4 steps out and sets a ball screen for #3. As that is happening, #5 screens down for #1. #3 comes over the top of the ball screen looking to hit #2 on the right wing or #1 popping up off the down screen.

3

## Duke Set Play vs. Man Defense



If the first options are not available, #5 will set a back screen for #4 rolling to the basket after setting the ball screen for #3.