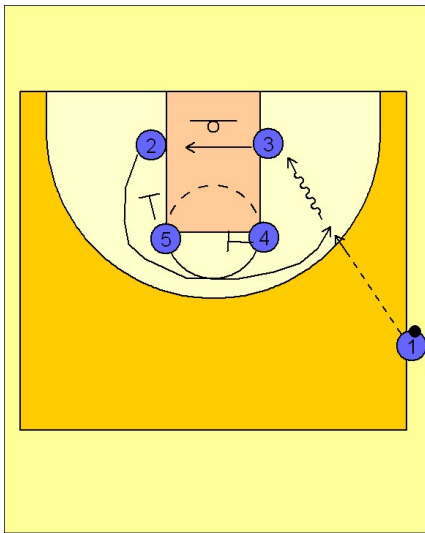


Duke

Side ob (2)

1

Duke OB Side Out



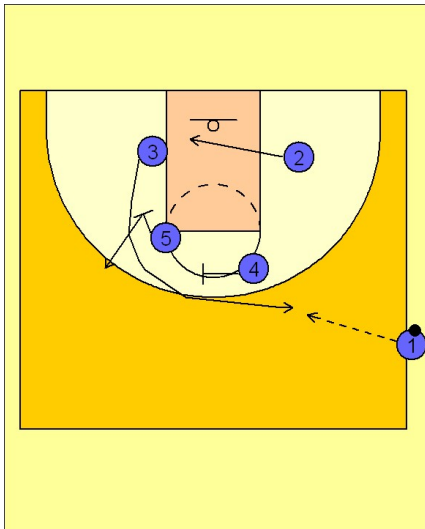
(#5) and (#4) set screens for (#2) and (#3) curling up to the top and around.

First (#2) takes the screen from (#5) and (#4) with (#2) sliding over to follow him.

If (#2) is open he can receive the ball for the shot or take the drive to the basket with the cleared out defense.

2

Duke OB Side Out

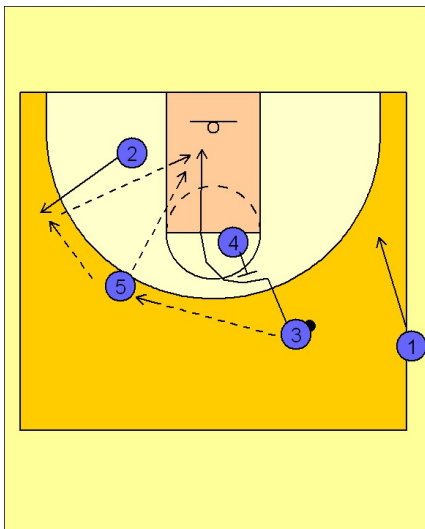


If (#2) is not open he continues down to where he started. Now (#3) follows close behind with screen from (#5) and (#4). (#1) will enter the ball to (#3) at the top.

(#5) after screening, pops out to the top to receive a pass on the perimeter.

3

Duke OB Side Out



(#3) passes to (#5) who passes to (#2) who has continued his circle and popped out to the other wing.

(#4) then steps up and sets a back screen for (#3) cutting to the basket. Depending on the timing of the play, (#5) or (#2) can make the entry pass to (#3) cutting to the basket off the back screen from (#4).