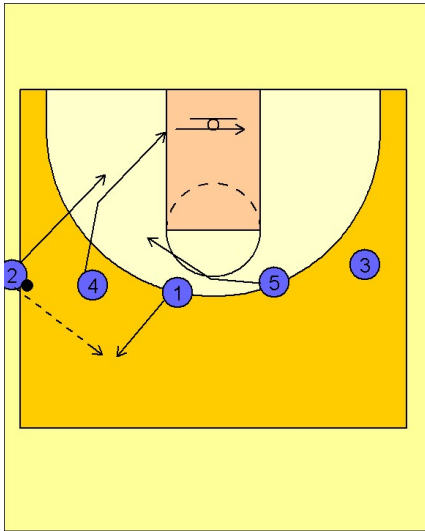


Duke

Side ob (3)

1



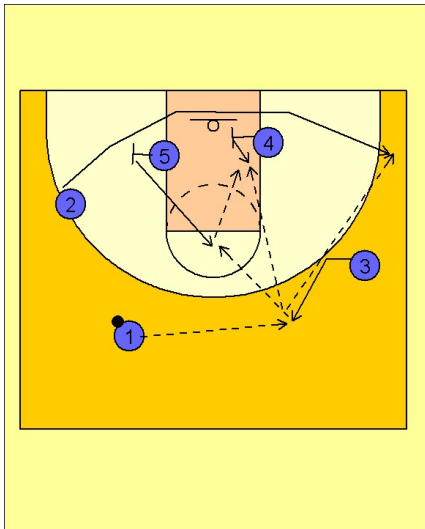
Duke OB Side Out

Straight line to begin. Shooter #2 takes it out of bounds.

#4 breaks to the basket with #5 right behind him. #1 breaks out to receive the inbounds pass.

#2 starts to cut down to the left low block area after inbounding.

2



Duke OB Side Out

#1 reverses the ball to #3 on the right side of the floor while #5 and #4 set a double staggered screen for the shooter #2 across the baseline.

#3 may pass to #2 in the corner or #4 sealing inside, or hit #5 flashing into the high post for the high / low entry pass to #4.