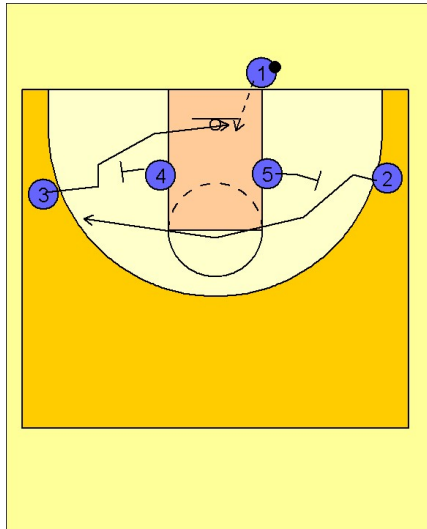


Florida

Ob under vs. man (4)

1



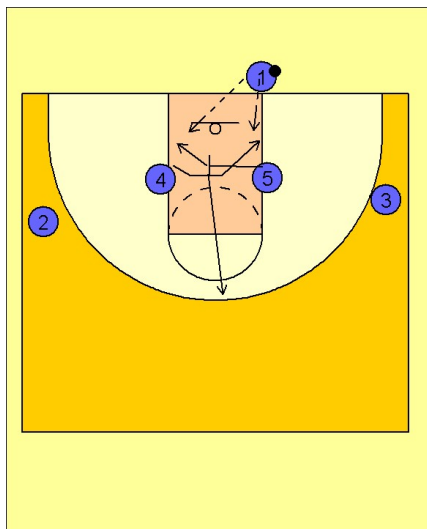
Florida Ob Under vs. Man

1 - 4 alignment to begin this play.

#4 and #5 start the play by stepping out and screening for #3 and #2 on their respective wings.

#3 cuts under the screen looking for the inbounds pass under the basket while #2 cuts over the top of the screen and to the opposite wing area.

2



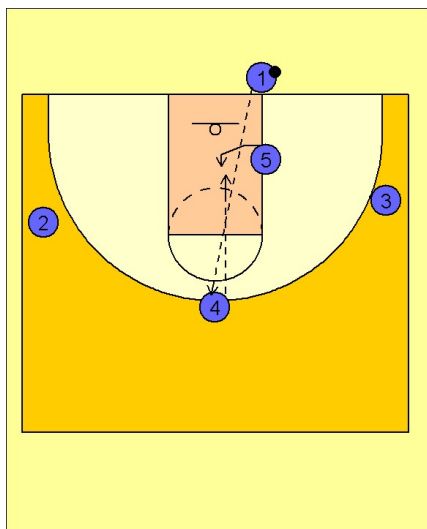
Florida Ob Under vs. Man

If #2 and #3 are not open, #5 will screen across for #4.

As in the last play, #4 has the option to cut over the screen and look for inside position and the inbounds pass underneath the basket.

#4 can also fake over the top of the screen and break out on top to receive the inbounds pass.

3



Florida Ob Under vs. Man

If #4 catches the ball on top, #5 will seal inside looking for the high / low pass from #4.