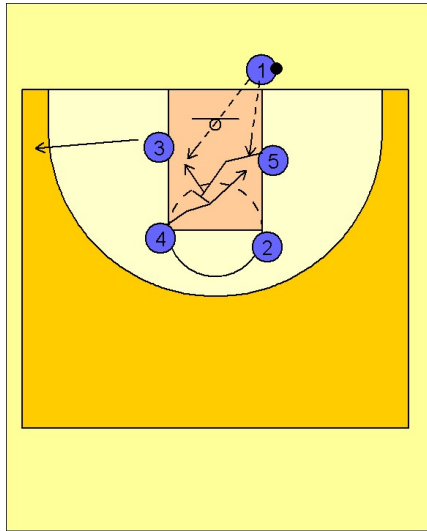


# Florida

## Ob under vs. man (5)

1



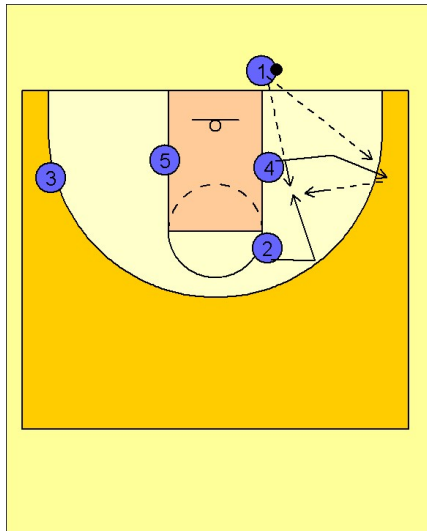
Florida Ob Under vs. Man

Box set to begin.

#5 starts the play by setting a diagonal back screen for #4. At the same time #3 is breaking out to the left corner area.

#1's first look is #4 coming off the back screen. Next, after screening, #5 pins and seals and looks for the pass inside from #1.

2



Florida Ob Under vs. Man

If #4 did not get the ball he breaks out to the right wing / corner area.

#2 looks to receive the pass and then cuts back door looking for the pass from #4. #2 may also look to cut straight to the basket if he is being guarded closely by his defender and receive the pass directly from #1.