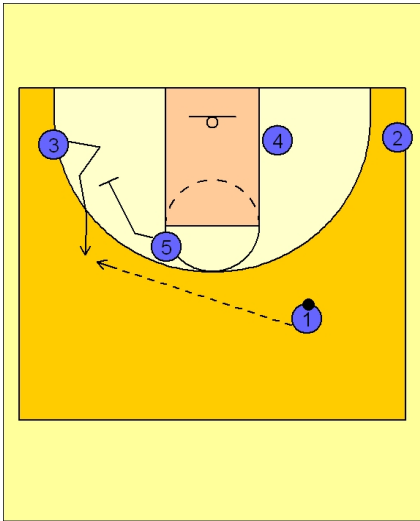


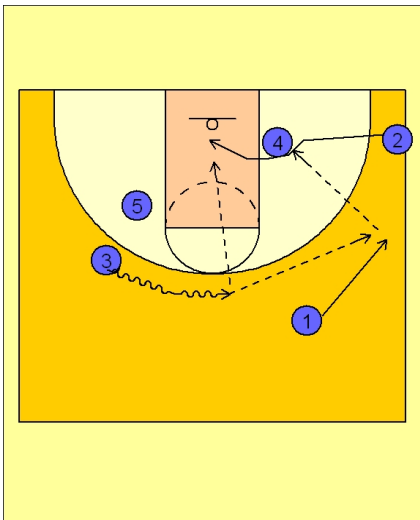


Quick hitter (11)



Florida Quick Hitter vs. Man

#5 screens away for #3 on the left wing. #1 enters the ball to #3 on the left wing / top area.



Florida Quick Hitter vs. Man

As #3 catches the ball, he drives the ball across the top.

#1 slides to the wing area while #2 cuts over the top of #4 in the lane. Again, this is a popular cut in college basketball with the intent to have #4's defender help just a bit on the cut over the top of the post man, so that #4 can get better low post position and receive the entry pass from #1.