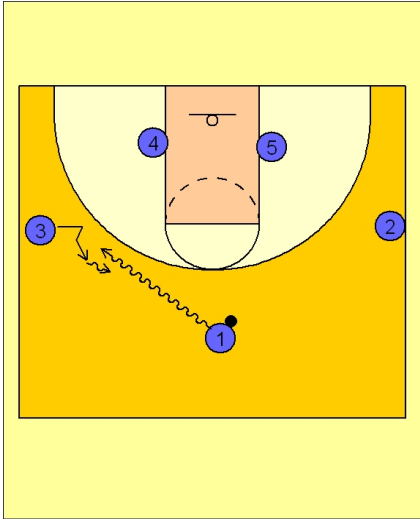




### Set play (23)

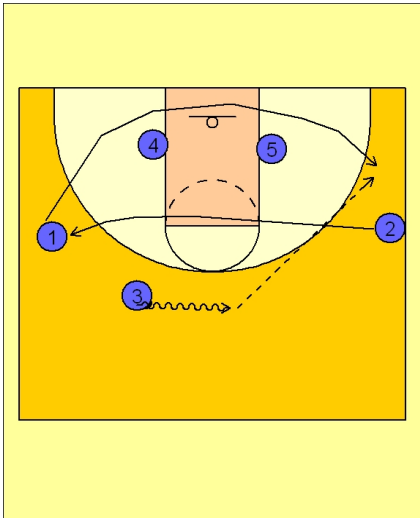


#### Florida Set Play vs. Man

3 out 2 in alignment to begin.

#1 dribbles at #3 on the left wing and executes a dribble hand off.

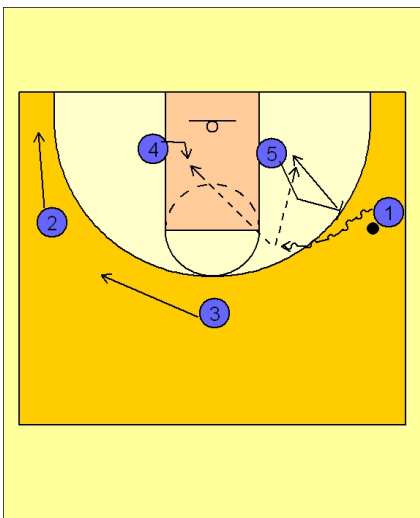
#3 takes the ball and starts toward the middle of the floor.



#### Florida Set Play vs. Man

As #3 drives the ball to the top of the key area, #1 cuts under #4 and #5 out to the opposite wing while #2 cuts across the FT line area to replace the spot #1 just vacated.

#3 enters the ball to either wing...here we see him enter the ball to #1 on the right wing.



#### Florida Set Play vs. Man

Once #1 has the ball, #3 and #2 clear out to the back side of the floor.

#5 moves up and sets a ball screen for #1.

As #1 comes off the ball screen, he looks for #5 rolling to the basket or #4 ducking in the lane looking for the post entry pass.