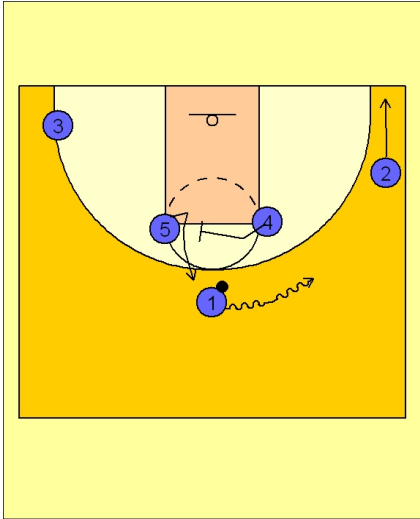




Set play (24)

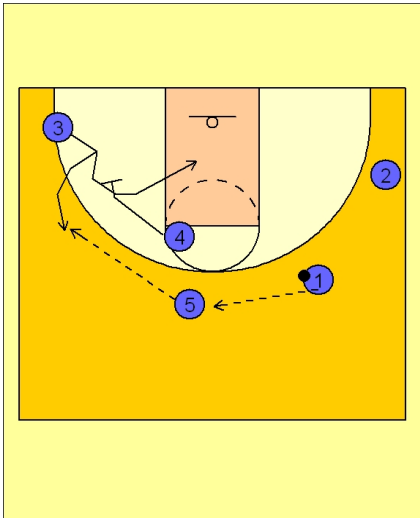


Florida Set Play vs. Man

#1 starts the play by dribbling to the right side of the floor. As this action is taking place, #4 moves across the FT line and screens for #5.

#5 uses the screen and pops out to the top of the key area.

#2 flattens out on the baseline as #1 brings the ball over.

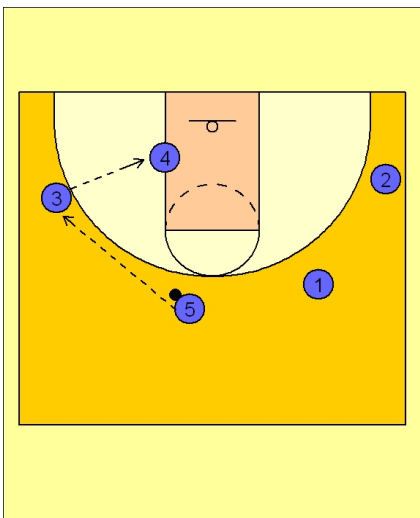


Florida Set Play vs. Man

As #5 pops out, #1 picks up his dribble and passes the ball to #5 on top.

#4, after screening for #5, continues his movement towards the left wing area and sets a screen for #3.

#3 has two options. He can use the screen to get open on the left wing or he can curl over the screen and into the lane.



Florida Set Play vs. Man

If he uses the screen to get open on the left wing, #5 enters the ball to #3 who will look to hit #4 isolated on the low block.



Florida Set Play vs. Man

If #3 chooses to curl over the screen set by #4, #5 will look inside first to #3 and then dribble the ball over a to improve his passing angle into the post player #4.

This "curl" action by #3 is quite common now in college basketball as it forces #4's defender to help on the curl, thus giving #4 a better opportunity to back down and set up closer to the basket.

