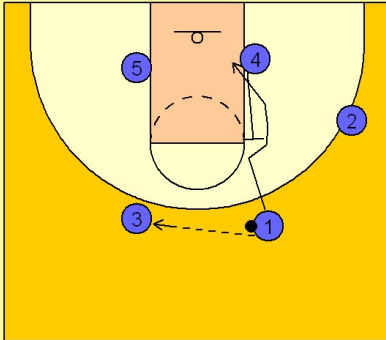


Florida

Set play (8)

1

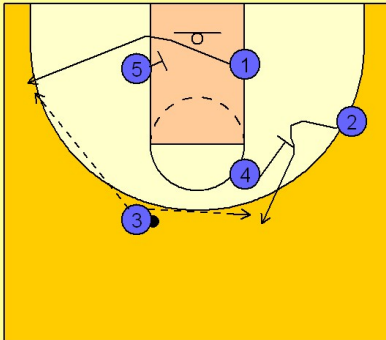
Florida Set Play vs. Man



#1 passes across the top to #3. #4 steps out and back screens for #1 who cuts through the lane and to the block opposite the ball.

2

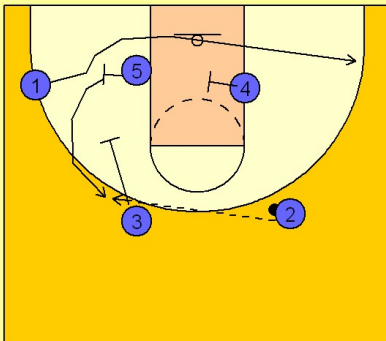
Florida Set Play vs. Man



#1 will then cut off the screen from #5 out to the left wing / corner area. #4 screens away for #2. #3 can hit either wing that is open.

3

Florida Set Play vs. Man



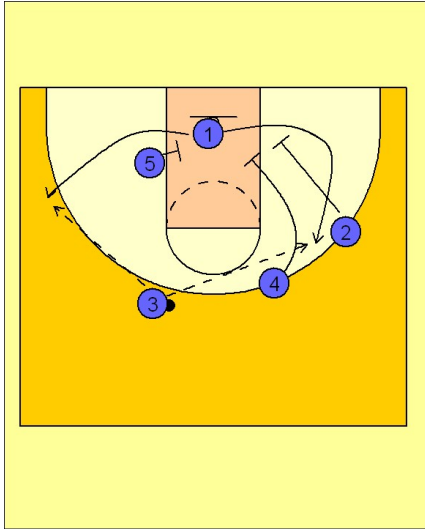
To continue, we will assume #3 has hit #2 on the right wing. #1 will then get two screens along the baseline from #5 and then from #4. #3 screens down for #5, who after screen for #1, breaks up on top for the perimeter jumper. You must remember that Florida possesses many players of various sizes who can all shoot the 3 point shot.

Florida

Set play (8)

4

Florida Set Play vs. Man



One option Florida uses on this play is instead of #4 screening away in the beginning for #2, both #4 and #2 can cut down and set a double screen for #1. This gives #1 the option to use the single screen out the left side from #5 or the double screen from #4 and #2 on the right side.