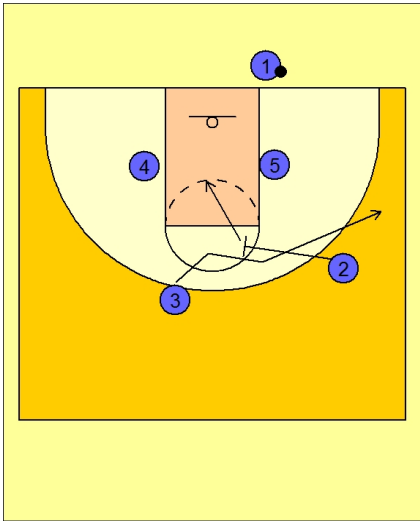


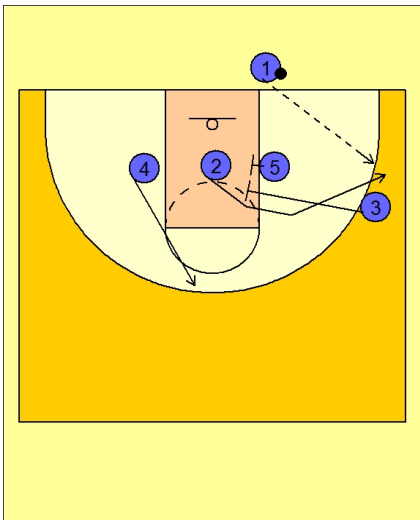


Ob under vs. man (11)



Arizona Ob Under vs. Man

#2 screens in near the FT line for #3. This is all a misdirection. After screening, #2 cuts into the middle of the lane.



Arizona Ob Under vs. Man

As soon as #3 gets to the wing, he immediately cuts back to the lane and sets a double screen with #5 in the lane.

#4 cuts up to the top.

#2 cuts back hard off the double looking for the open shot on the wing.