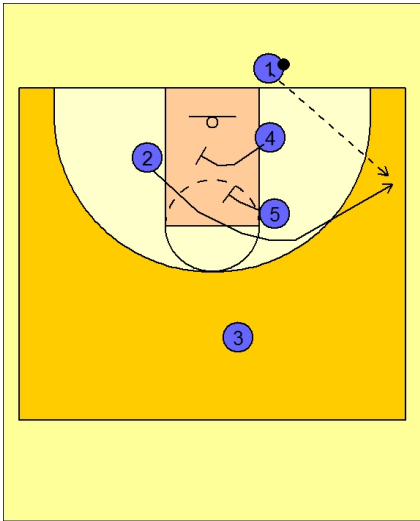




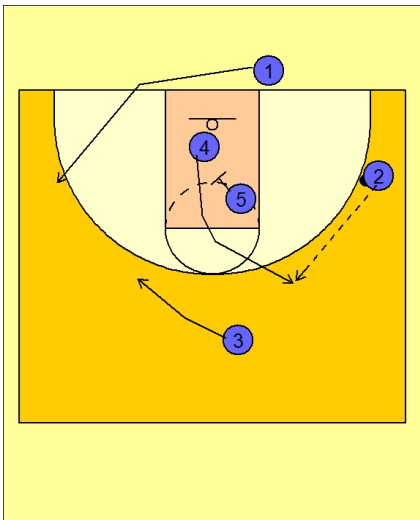
**Ob under vs. man (4)**



**Connecticut Women OB Under vs. Man Defense**

#4 and #5 sets screens in the lane for the shooter #2.

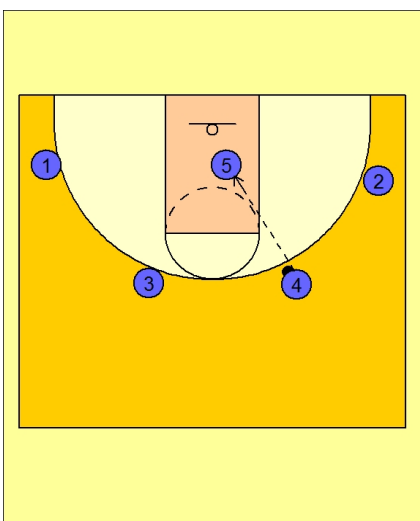
#1 looks to enter the ball to #2 on the right wing area.



**Connecticut Women OB Under vs. Man Defense**

On the catch, #5 is now screening in for #4 who breaks up to the top.

#1 entered the ball and cut out to the opposite side of the floor. #3 spaced out away from #4.

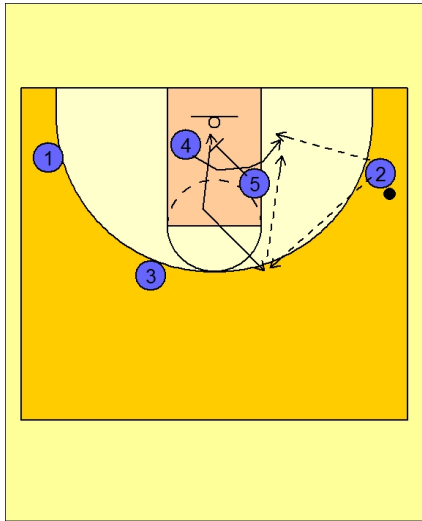


**Connecticut Women OB Under vs. Man Defense**

#4 now looks to #5 isolated in the low post who had just got done screening down for #4, opened up and sealed inside for the high / low entry pass.



**Connecticut Women OB Under vs. Man Defense**



Another option on this play is for #4 not to cut out on top from #5's screen, but this time will curl around the screen and look for the post entry pass from #2.

#5 could either step to the opposite post after screening or flash out on top and create the same high / low entry pass option in the beginning.