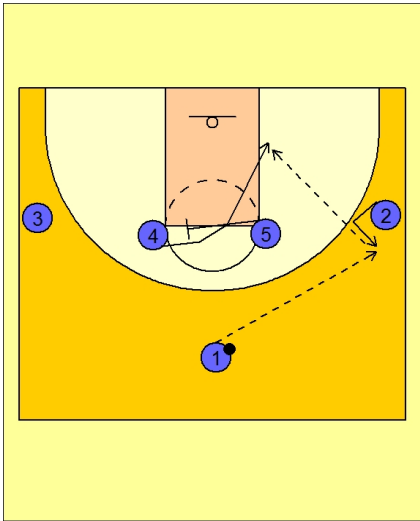




Set play (18)



Duke Set Play vs. Man Defense

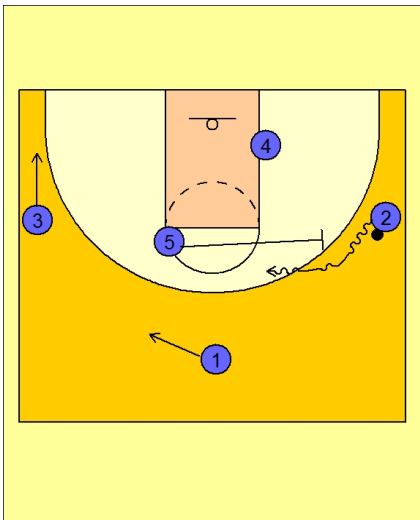
1 - 4 high set to begin.

#1 enters to #2 on the right wing.

#5 screens across for #4.

#4 cuts over the top of the screen from #5 and cuts to the low block on the ball side.

#2 looks inside first to #4.

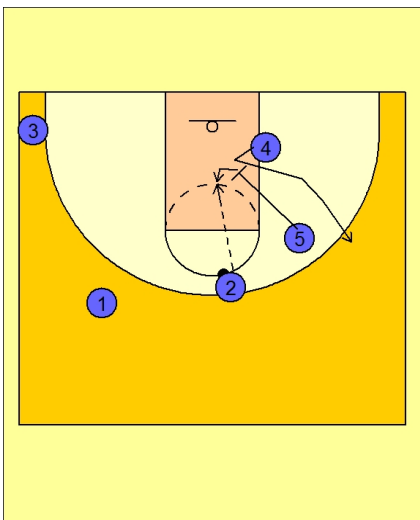


Duke Set Play vs. Man Defense

If #4 is not open, #5 slides over to the ball and sets a ball screen for #2.

#2 drives the ball over the ball screen.

#3 slides to the opposite corner while #1 slides to the left top / wing area.



Duke Set Play vs. Man Defense

After ball screening, #5 rolls to the basket and sets a down screen for #4.

#5 screens in the lane, opens up and seals in the middle of the paint. #4 pops out to the right wing.

#2 first looks inside to #5.



Duke Set Play vs. Man Defense

If #5 is fronted, #2 quickly reverses the ball to #4 on the right wing. #4 looks to pass inside to #5.

