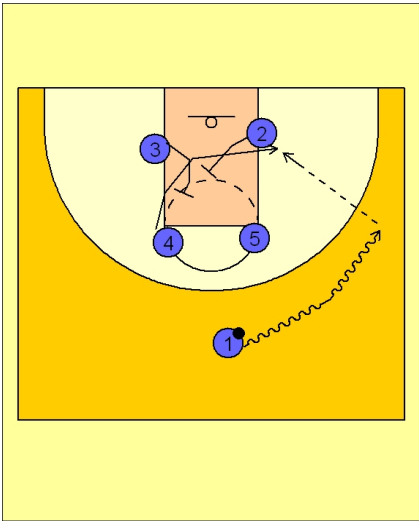




Set play (12)

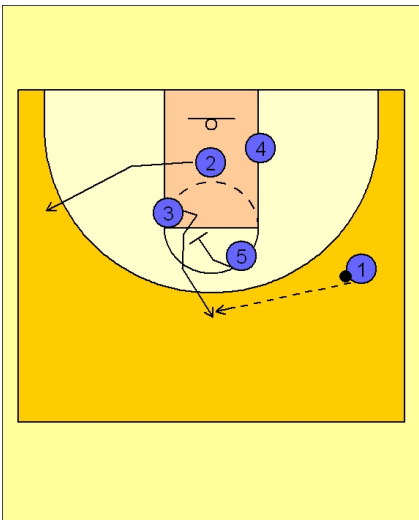


Arizona Set Play vs. Man

Box set to begin. #1 brings the ball to a side.

#3 and #2 set a double staggered back screen for #4.

#4 cuts down to the ball side low block. #1 looks to get the ball to #4 on the blocks.



Arizona Set Play vs. Man

If #4 is not open, #5 sets a "pick the picker" screen for #3 freeing him for the open jumper on top.

#2 breaks out to the left wing.

From here Arizona is into their motion offense or passing game.