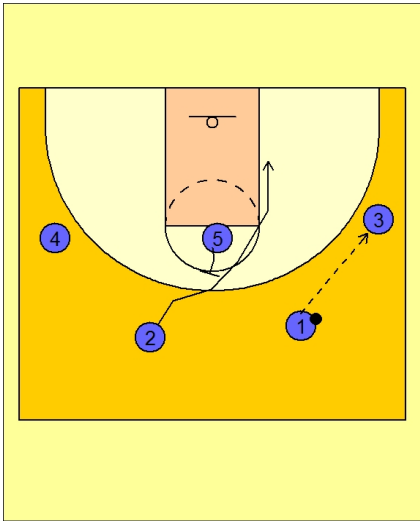




Set play (14)

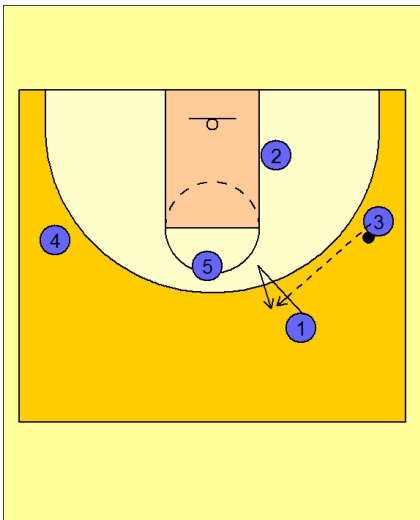


Arizona Set Play vs. Man

2 - 3 high alignment to begin.

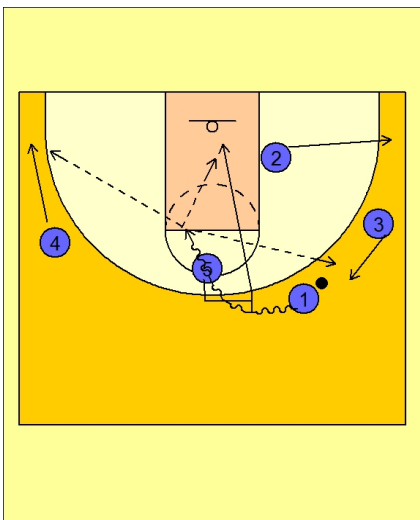
#1 passes to #3 on the right wing.

#5 then back screens for #2. #2 cuts to the ball side low block.



Arizona Set Play vs. Man

#1 fakes his cut away and comes back to get the pass from #3.



Arizona Set Play vs. Man

#5 now steps out and ball screens for #1.

#1 drives the ball into the gap off the ball screen from #5.

#5 rolls to the basket.

#4 spots up on the left side of the floor for the kick out pass from #1.

#3 fills up top while #2 cuts out to the right corner.

#1 looks to find the open player on the perimeter while #5 is now isolated in the post.