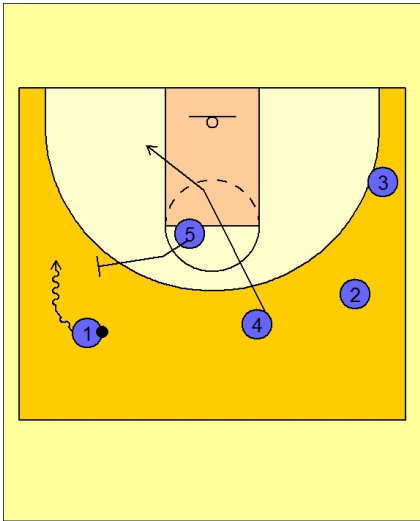


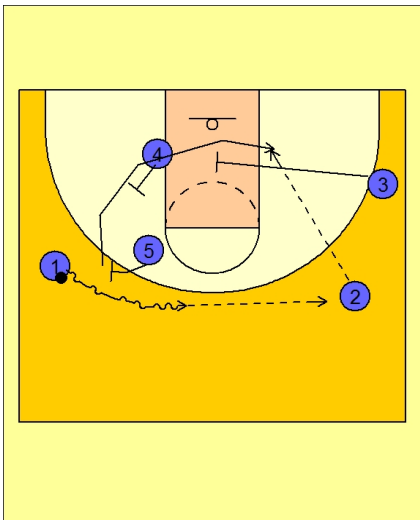


Set play (15)



Arizona Set Play vs. Man

- #1 takes the ball down to the left wing.
- #4 cuts down to the ball side low block.
- #5 steps out and prepares to ball screen for #1.



Arizona Set Play vs. Man

- #1 comes off the ball screen from #5 and looks to score.
- If he cannot get a shot, he will reverse the ball across the top to #2.
- #5 rolls off the ball screen and gets two screens. The first is from #4 and then again from #3 cutting into the lane.
- #2 looks to feed the ball inside to #5.