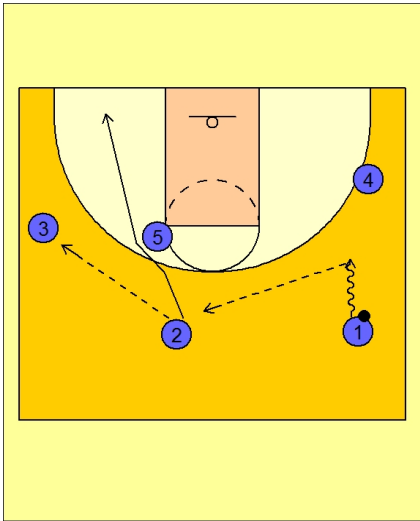


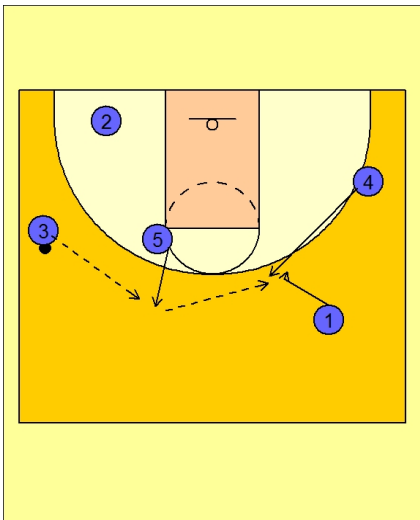


Set play (16)



Connecticut Women Set Play vs. Man Defense

#1 reverses the ball to #2 on top who passes to #3 on the left wing and then cuts to the ball side short corner area.

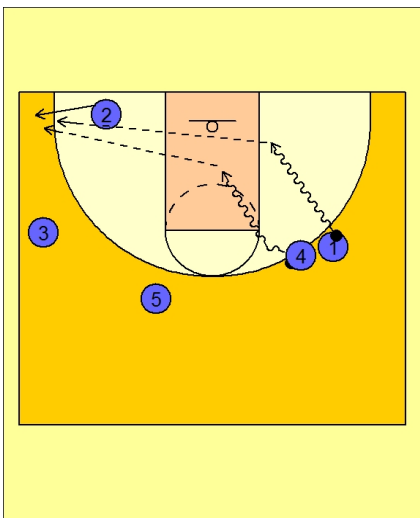


Connecticut Women Set Play vs. Man Defense

#5 steps out to receive the next pass from #3.

On #5's catch, #4 is flashing to the back side top of the key area to receive the next pass from #5.

#1 cuts towards #4 to receive the hand-off.



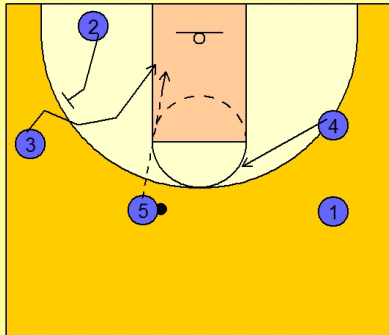
Connecticut Women Set Play vs. Man Defense

#4 could hand the ball off to #1 who would then attack the rim.

#4 could fake the hand-off and attack the rim herself with #1 cutting out to the right wing area.

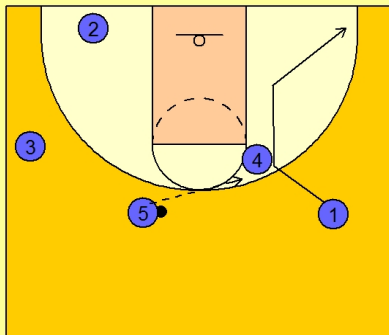


Connecticut Women Set Play vs. Man Defense



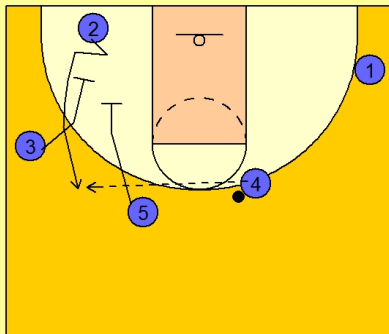
#5 also has the option to look for the potential back screen on the ball side with #2 screening for #3.

Connecticut Women Set Play vs. Man Defense



One last option on this play is for #4 to fake the hand-off with #1 and keep the ball.

Connecticut Women Set Play vs. Man Defense



#5 and #3 would then set a double down screen or a double staggered down screen for #2 and the potential open jumper on top.