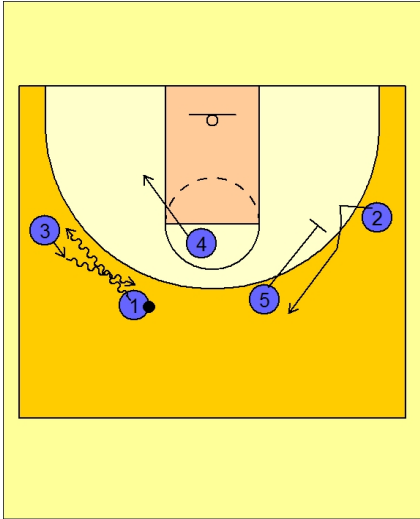




Set play (17)



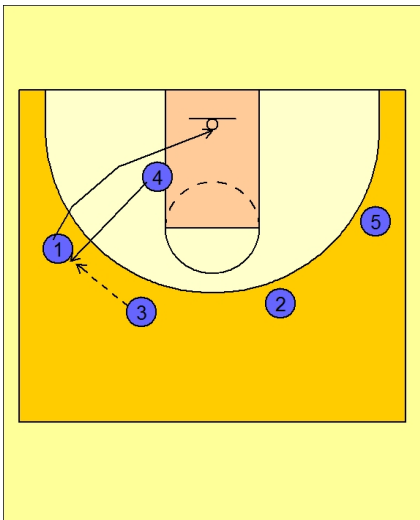
Arizona Set Play vs. Man

2 - 3 high to begin.

#1 executes a dribble hand-off with #3 on the left wing.

#4 cuts to the ball side low block.

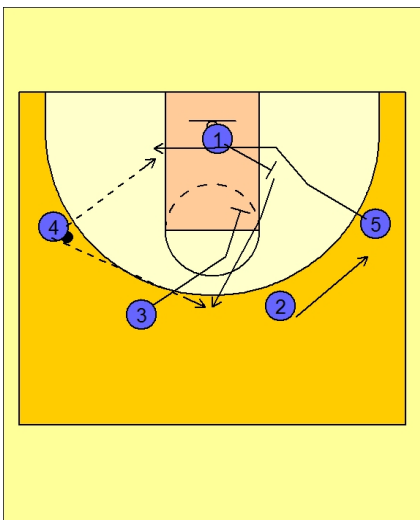
#5 screens away for #2 on the right wing.



Arizona Set Play vs. Man

#3 drives the ball up and then turns back quickly to hit #4 breaking out to the left wing.

#1 has cut under the basket once he handed the ball off to #3 in the first diagram.



Arizona Set Play vs. Man

#1 now sets a back screen for #5 who cuts to the low block looking to receive the post entry pass from #4.

#2 flattens out on the right wing.

#3 "picks the picker" and down screens for #1.

#4 looks to hit #1 for the open jumper on top if #5 is not open.