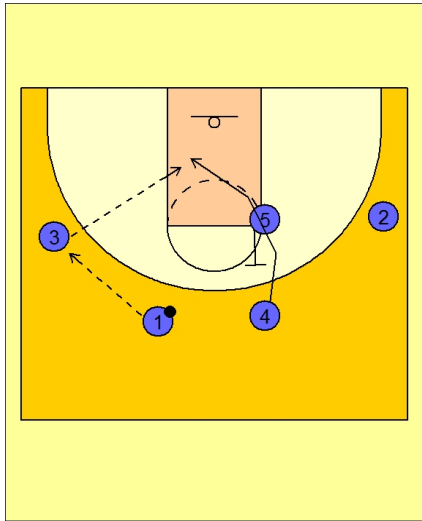




Set play (18)

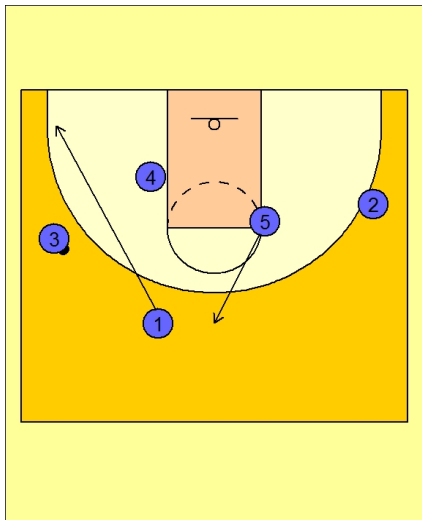


Arizona Set Play vs. Man

2 - 3 high set to begin.

#1 enters the ball to #3 on the left wing. #4 cuts hard off the back screen from #5.

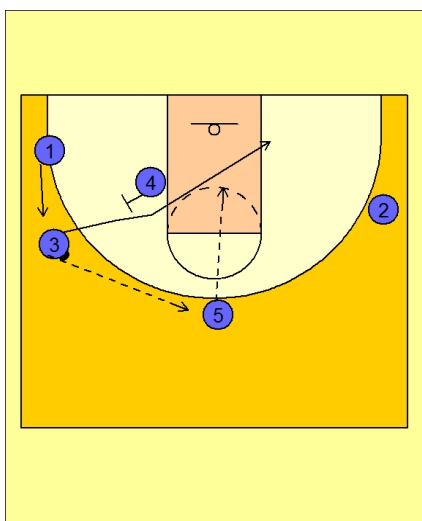
#3 looks inside to #4 cutting to the basket.



Arizona Set Play vs. Man

#1 will then follow his pass after #4 cuts through.

#5 cuts up to the top for ball reversal.



Arizona Set Play vs. Man

#3 reverses the ball to #5 on top.

#4 back screens for #3 who cuts through the lane. #1 slides up the wing area.

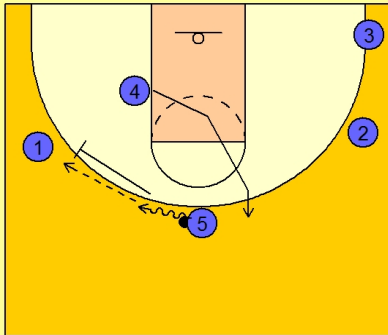
#5 looks inside to the cutting #3.



Arizona Set Play vs. Man

If #3 is not open he will continue his cut to the corner.

#5 now passes to #1 while #4 cuts up to the top. #5 slides over to execute the pick and roll action with #1.



Arizona Set Play vs. Man

#1 looks to create and score off the ball screen from #5. #5 can look to pick and roll or pick and pop out.

#1 will also look to kick the ball out to either #4, #2 or #3, depending on which defender helps on penetration.

#3 will look to cut to the basket behind his defender if he notices his defender is watching the ball on the drive.

