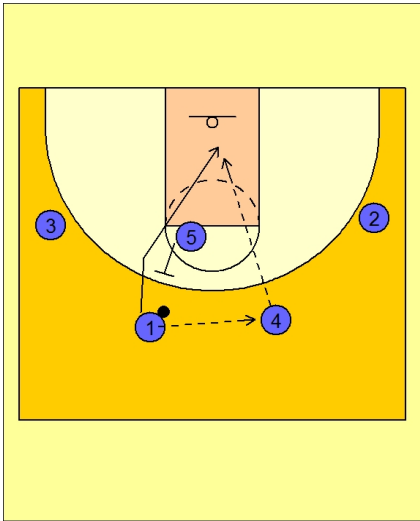




**Set play (20)**

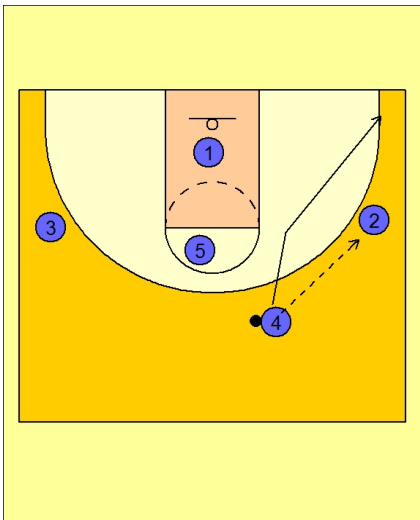


**Arizona Set Play vs. Man**

Familiar 2-3 high set to begin.

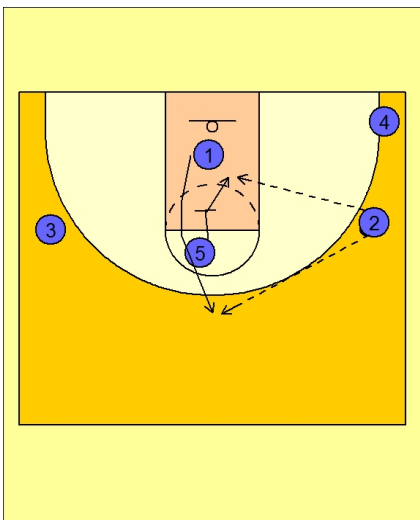
#1 enters the ball across the top to #4.

#1 cuts hard off the back screen from #5. #4 looks for #1 cutting to the rim.



**Arizona Set Play vs. Man**

#4 will pass to #2 on the right wing and then cuts to the ball side corner.



**Arizona Set Play vs. Man**

#5 now turns around and screens down in the lane for #1.

#1 cuts up off the screen looking for the open jump shot. #5 can look to slip the screen and cut to the rim if his defender tries to cheat out on #1.



### Arizona Set Play vs. Man

If no shot for #1, #5 hustles up to the top and will play the two man game with #1.

#1 will look to create off the ball screen and score or hit #5 rolling to the basket. #1 also has options to kick out on the perimeter depending on where the defensive help comes from.

