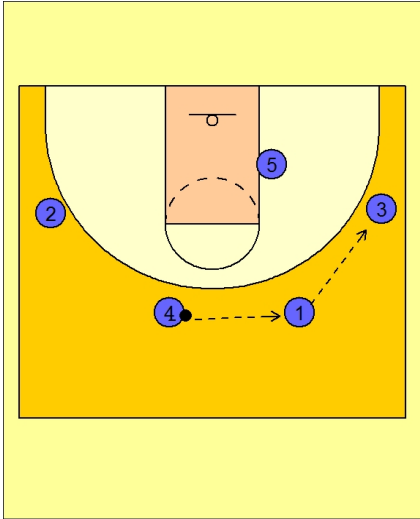




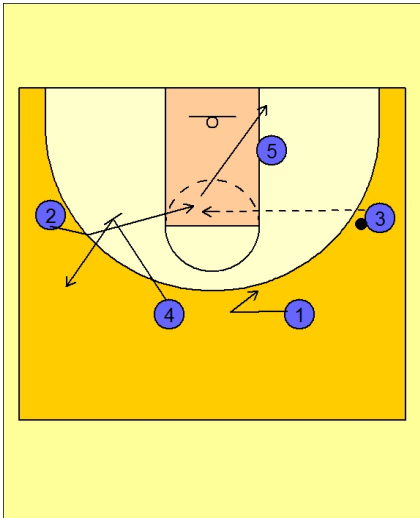
Set play (21)



Arizona Set Play vs. Man

4 out, 1 in set to begin.

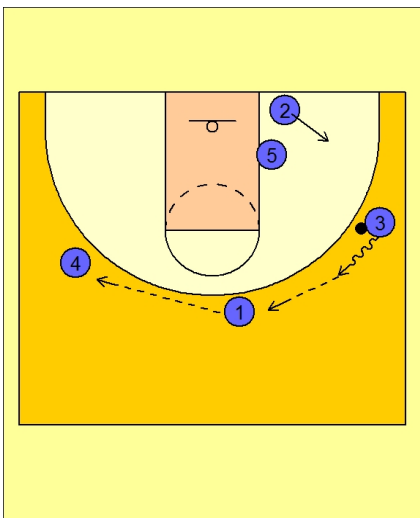
#4 reverses the ball across the top to #1 who then passes to #3 on the right wing.



Arizona Set Play vs. Man

#4 screens away for #2. #2 curls off the screen and into the lane. #3 delivers the pass if #2 is open.

#4 pops out after #2 curls and #1 fakes the cut away and comes back to receive the next pass from #3.



Arizona Set Play vs. Man

#3 drives the ball up a bit and then reverses the ball to #1 on top who then passes to #4 on the left wing.

#2 replaces #3 on the right wing area.



Arizona Set Play vs. Man

As soon as #3 passes the ball to #1 on top, #5 sets the back screen for #3. The rim cutting action of #3 is timed with the same movement with #2 cutting up to the wing.

Almost a misdirection play.

