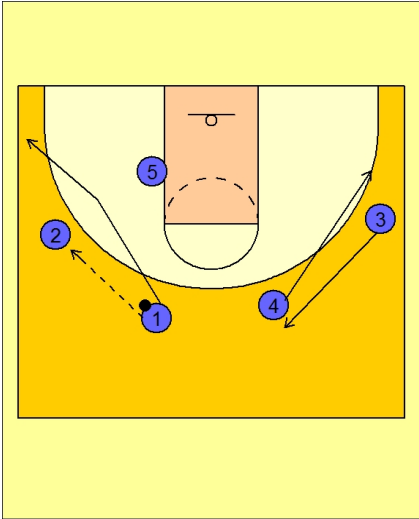




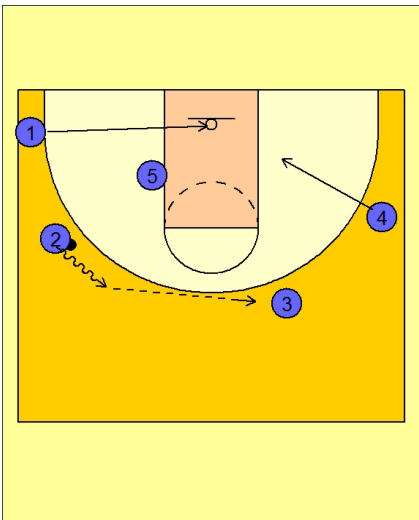
Set play (22)



Arizona Set Play vs. Man

#1 passes to #2 on the left wing and then cuts through to the ball side corner.

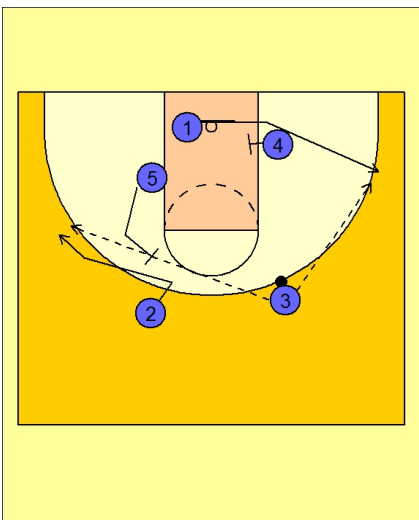
#4 and #3 exchange spots.



Arizona Set Play vs. Man

#2 drives the ball up and reverses it to #3.

#4 slides down to the low block while #1 is cutting through the lane.



Arizona Set Play vs. Man

As soon as #2 passes to #3, #5 sets a flare screen for #2 on top.

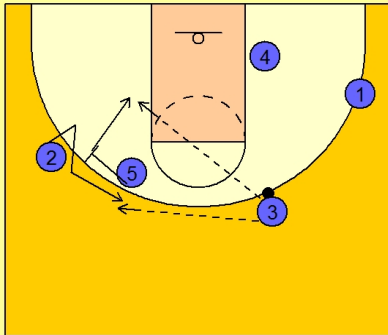
At the same time, #4 is screening in the lane for #1, trying to get him open on the wing for the open shot.

#3 has to make the best decision for the score.



Arizona Set Play vs. Man

If #2 does not get the ball, #5 can quickly turn and rescreen for #2.



Arizona Set Play vs. Man

If #2 gets the ball on the initial flare screen, #5 can play pick and roll basketball.

#4 slides up while #2 looks to create.

