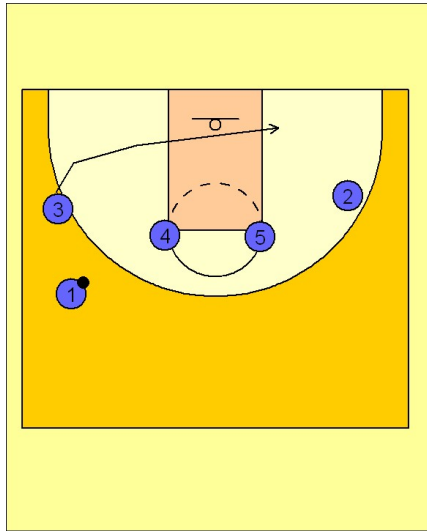


# Arizona Set play (10)

1

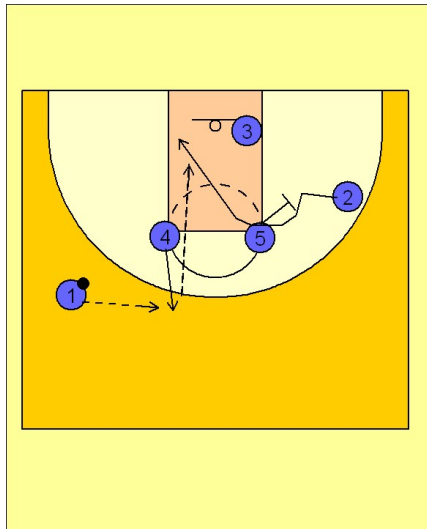


Arizona Set Play vs. Man Defense

! - 4 high to start.

#3 clears out to start the play.

2

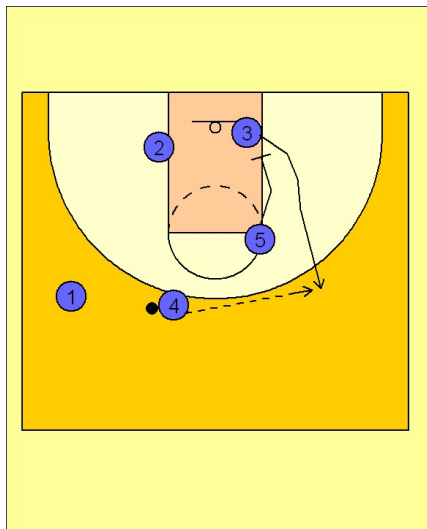


Arizona Set Play vs. Man Defense

#4 steps out to receive the pass from #1.

#2 cuts right behind #3's cut off the screen from #5 on the right elbow.

3



Arizona Set Play vs. Man Defense

If #2 is not open, #5 moves down and screens for #3 on the block away from the ball. #4 can look to hit #3 for the jumper off the down screen from #5.