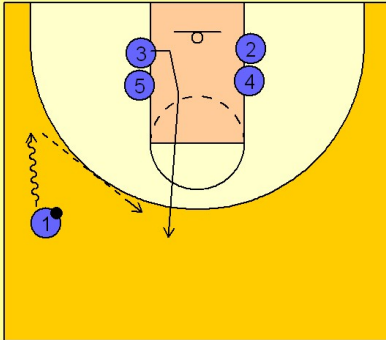


Arizona

Set play (3)

1

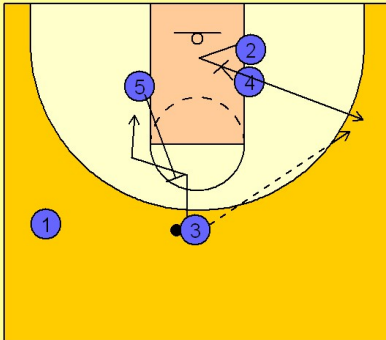
Arizona Set Play



(#1) drives the ball down to the wing. That is (#3's) signal to come up to the top of the key area for the entry pass from (#1).

2

Arizona Set Play



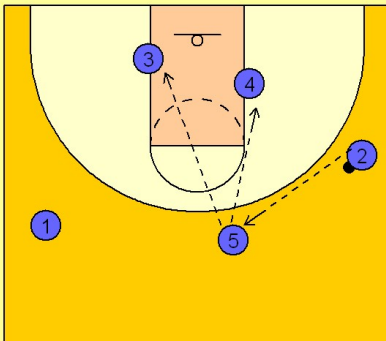
(#2) receives a pick in the lane from (#4). (#3) hits (#2) with a pass to the wing.

Once the pass is delivered, (#5) comes up and sets a back screen for (#3).

(#5) steps out after the back screen a

3

Arizona Set Play



(#5) steps out after the back screen and receives a pass from (#2). Both (#4) and (#3) duck into the lane working for good post position and a post pass from (#5).