

Arizona

Set play (5)

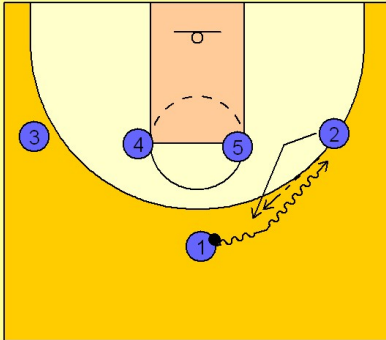
1

Arizona Set Play vs. Man

1 - 4 high to begin.

#1 dribbles at #2 clearing him out and back up to the top, replacing the position #1 just left.

#1 then passes to #2 on top.

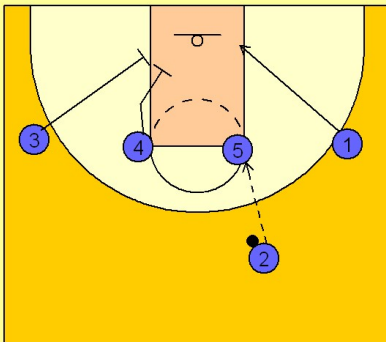


2

Arizona Set Play vs. Man

Once #2 receives the ball he hits #5 in the high post elbow.

#1 cuts to the basket while #3 and #4 set up for a double screen on the back side.



3

Arizona Set Play vs. Man

#5 looks for #1 coming off of the double screen for the shot. He also can look for #4 stepping into the lane after double screening.

#2 can cut to the basket on the open side of the floor looking for a pass from #5 and a potential open area to drive to the basket.

