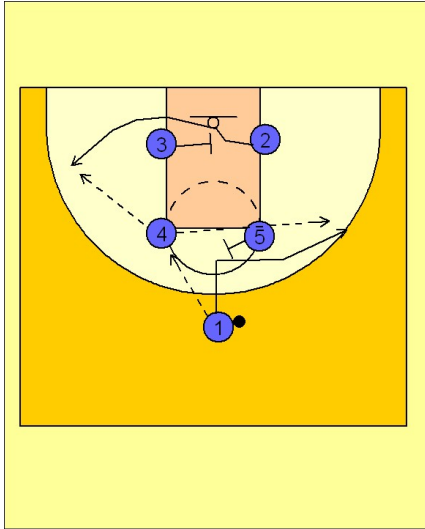


# Arizona

## Set play (6)

1



Arizona Set Play vs. Man

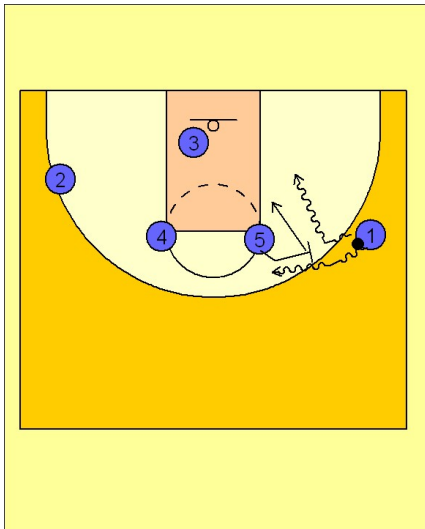
Box set to begin.

#1 enters to either post player. In this diagram he hits #4 on the left elbow.

#1 then cuts down the middle of the lane and then breaks to the right of the screen from #5. He fades to the back side for the skip pass from #4.

While this is happening, #3 screens across the lane for #2 trying to free him for a shot on the opposite wing area.

2



Arizona Set Play vs. Man

If #1 gets the ball on the skip pass from #4, #5 steps out and executes a pick and roll with #1. He can look to come over the top, which then #5 will roll to the basket. Or he can fake coming over the top and take it to the cleared out area at the basket.