

# Arizona

## Set play (7)

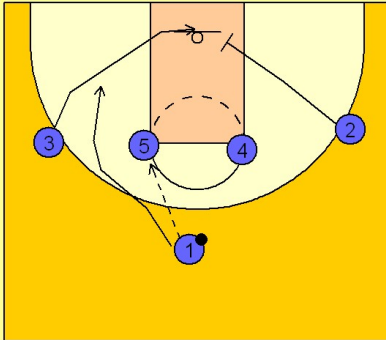
1

Arizona Set Play vs. Man

1 - 4 high to begin.

#1 hits #5 on the left elbow. #3 cuts to the basket followed by #1.

#2 moves down into the lane to set a screen for #3.



2

Arizona Set Play vs. Man

#5 turns and looks at the top for #3 coming off a screen from #2 and #4.

After screening, #2 uses a screen by #1 to get open on the ball side wing and a potential pass from #5.

