

Arizona

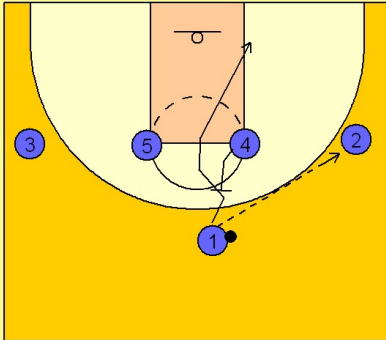
Set play (8)

1

Arizona Set Play vs. Man

1 - 4 high to begin.

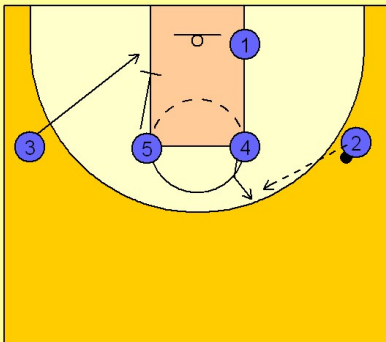
#1 enters to the wing player #2 and cuts to the basket off the back screen from #4, known as the "UCLA cut".



2

Arizona Set Play vs. Man

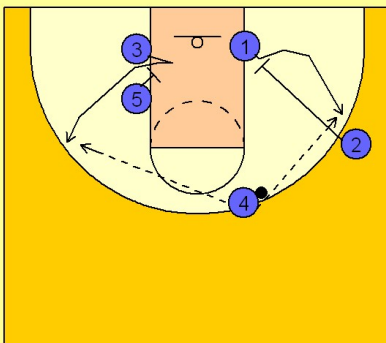
After screening, #4 steps out to receive the pass from #2. #3 cuts down into the lane and #5 follows him setting up for a screen.



3

Arizona Set Play vs. Man

#3 comes out off of #5's down screen while #2 down screens for #1. #4 has the option to take the first open receiver.



Arizona

Set play (8)

4

Arizona Set Play vs. Man

Once the ball is entered to a wing player, the inside players will screen for each other and Arizona will run their motion offense for the remainder of the shot clock.

