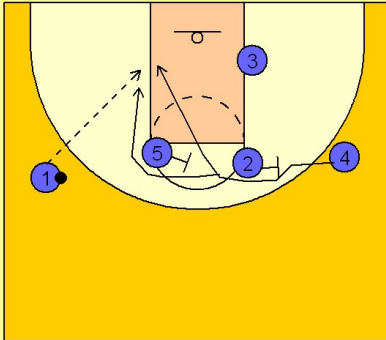


Arizona

Set play (9)

1

Arizona Set Play vs. Man

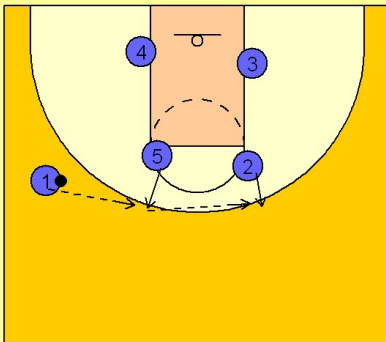


#1 has the ball looking for #4 coming off of two screen across the FT line. #4 can use both screens and come over the top cutting to the block, OR, he can cut down the middle after the first screen if the defense is cheating.

#1 will look to enter the ball on the block to #4 if he is open.

2

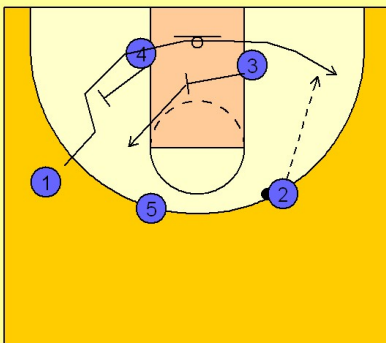
Arizona Set Play vs. Man



#5 steps out and #2 steps out. #1 reverses the ball to #5 who passes to #2.

3

Arizona Set Play vs. Man



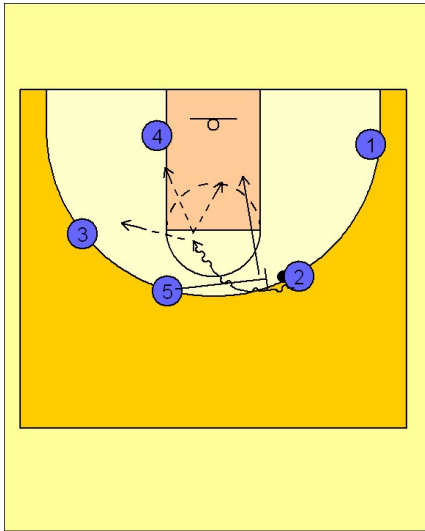
After #1 gives up the ball, #4 and #3 sets screens for #1 coming across the baseline looking to get open in the wing / corner area.

Arizona

Set play (9)

4

Arizona Set Play vs. Man



If #1 does not have a shot, #2 can use the ball screen from #5 and execute a pick and roll on top. #5 will roll to the basket or step back if he has the range. #2 can look to dump it to #5 or hit #3 on the drive and kick or down to #4 if his man helps up.