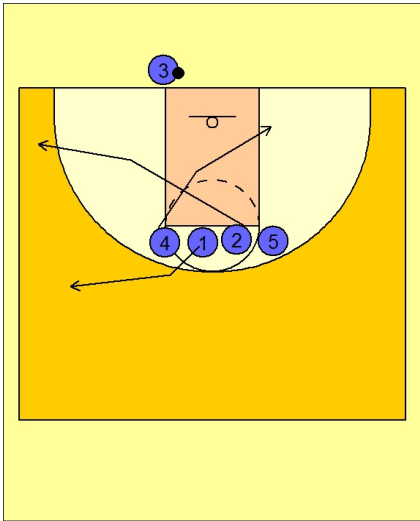




Ob under vs. zone (1)

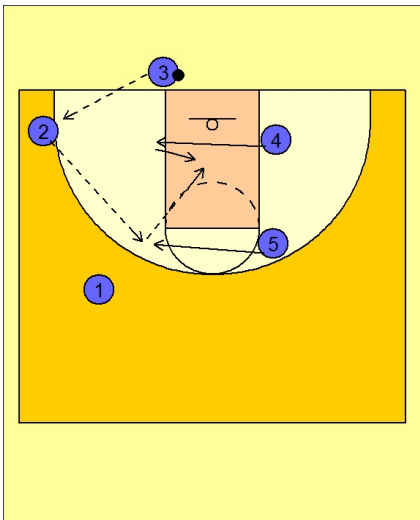


Connecticut Women OB Under vs. Zone Defense

#2 cuts to the ball side corner area.

#1 cuts to the ball side wing area.

#4 cuts to the opposite low block.

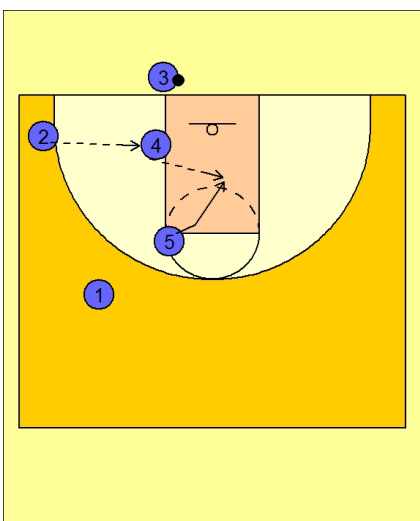


Connecticut Women OB Under vs. Zone Defense

#3 enters the ball to #2 in the corner area.

#4 flashes across to the ball while #5 also flashes across in the high post.

#2 looks to feed the high post who will then look high / low to #4.



Connecticut Women OB Under vs. Zone Defense

#2 could also hit #4 who would then look to score or drop the ball off to the diving high post player #5.