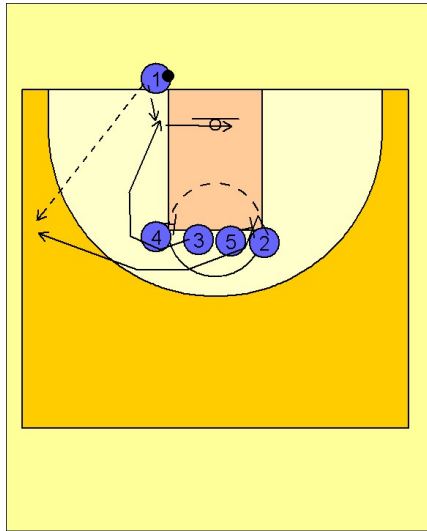


Connecticut wom Ob under vs. man (1)

1



Connecticut Women OB Under vs. Man Defense

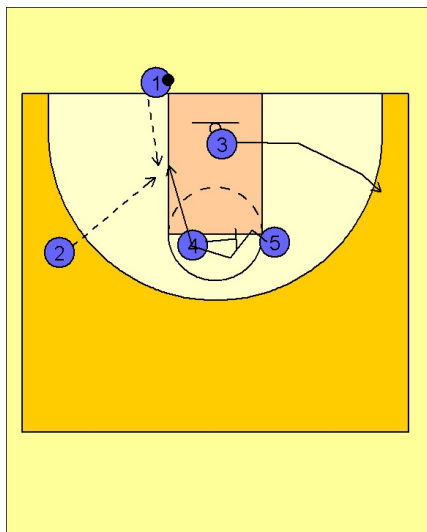
Straight line across the freethrow line to begin.

#4 screens for #3 and #5 screens for #2.

#3 curls over the top of the screen and to the ball for the quick hitting layup entry. If she does not get the ball, she cuts out of the lane toward the right wing area.

#2 breaks out to the ballside wing.

2



Connecticut Women OB Under vs. Man Defense

#4 then screens for #5 who curls over the top and down the lane towards the ball.

The entry pass to #5 could come from #1 or from #2 if #1 entered the ball to #1 in the previous diagram.