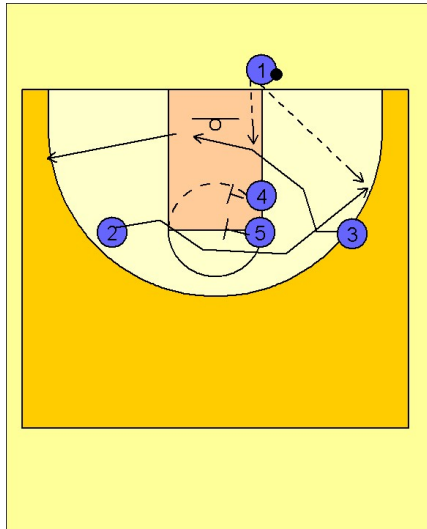


Connecticut wom

Ob under vs. man (3)

1



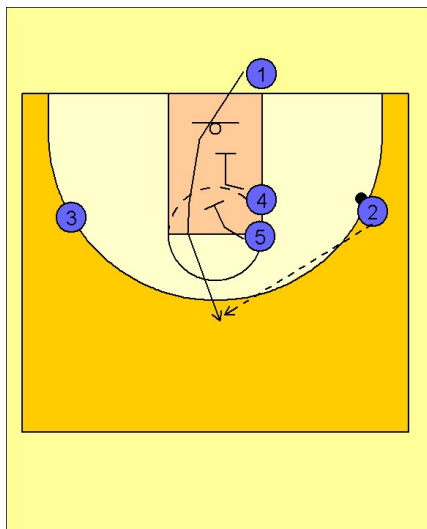
Connecticut Women OB Under vs. Man Defense

#3 starts the play by faking at the stacked players #4 and #5 and then cuts to the basket looking for the entry pass from #1.

#2 then follows #3's cut and comes off the double screen at the freethrow line elbow area from #4 and #5.

#1 will make the entry pass to #2.

2



Connecticut Women OB Under vs. Man Defense

Once #2 has the ball, #4 and #5 set a double staggered screen in the middle of the lane for #1 (hopefully a good shooter), to get open coming up to the top of the floor.