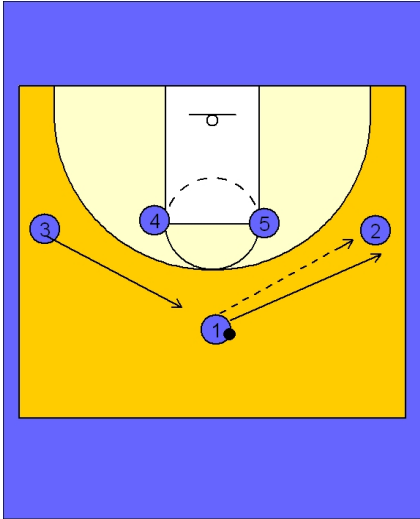




Quick hitter (8)

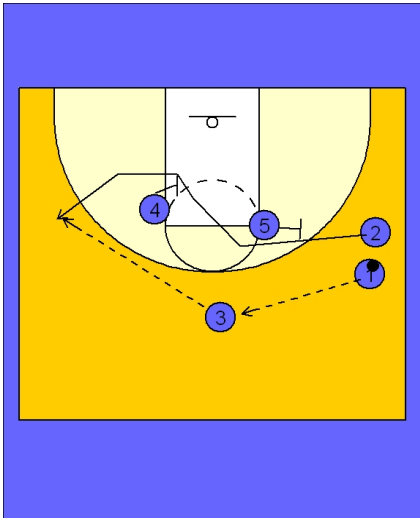


Connecticut Women Quick Hitter vs. Man Defense

1 - 4 high set to begin.

#1 enters the ball to either wing player. Here we see #1 passing to #2 on the right wing. #1 follows his pass and gets the ball back from #2.

#3 slides up to the top of the floor.



Connecticut Women Quick Hitter vs. Man Defense

#1 now reverses the ball to #3 on top while #2 cuts off a double staggered screen from #5 and #4.

#3 makes the pass to #2 for the open jumper on the left wing.