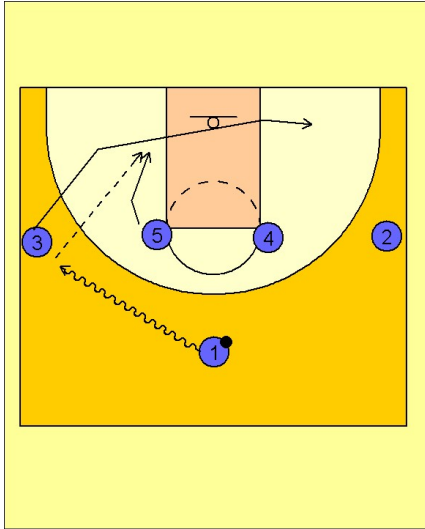


Connecticut wom

Quick hitter (3)

1



Connecticut Women Quick Hitter vs. Man Defense

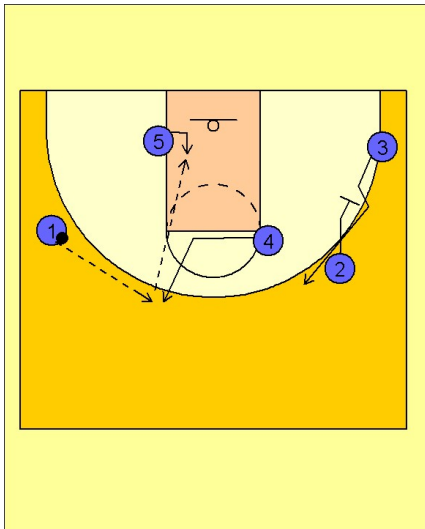
1 - 4 high set to begin.

#1 dribbles at #3 on the left wing.

#3 clears out to the opposite side of the floor.

#5 slides down to the low post. #1 can look to enter the ball to #5 if she has good position on the low block to score on the catch.

2



Connecticut Women Quick Hitter vs. Man Defense

Once #1 gets to the left wing area, #4 moves across and up to the top of the key area towards the ball side of the floor.

#1 makes the pass to #4 on top who looks to feed #5 inside. This move is effective when the defense elects to front #5 in the low block on the initial dribble entry.

#5 will look to seal the defender on her back as the ball is reversed on top, looking for the high / low entry pass from #4.

#2 screens away for #3 on the right wing as this action is taking place to occupy the weakside defenders.