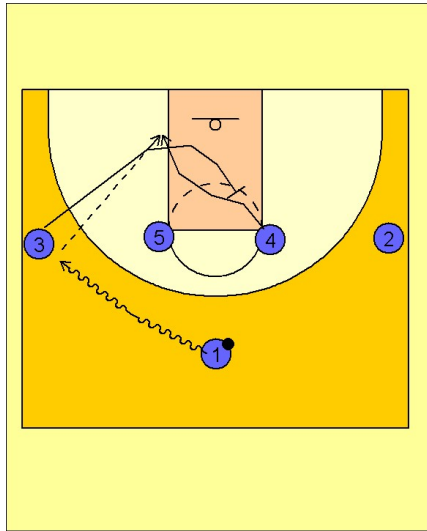


# Connecticut wom

## Quick hitter (4)

1



Connecticut Women Quick Hitter vs. Man Defense

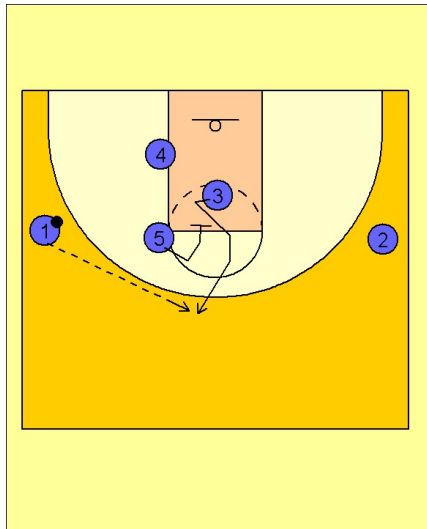
1 - 4 high set to begin.

#1 dribbles at #3 on the left wing.

#3 begins to clear out and then moves up the lane and sets a diagonal backscreen for #4.

#4 cuts to the ballside low block looking for the post entry pass from #1.

2



Connecticut Women Quick Hitter vs. Man Defense

If #4 does not receive the ball, #5 sets a downscreen for #3 in the middle of the lane.

#1 will look to hit #3 for the open shot on top.