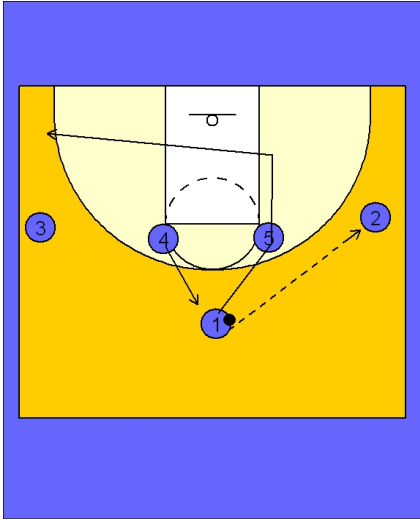




Set play (14)

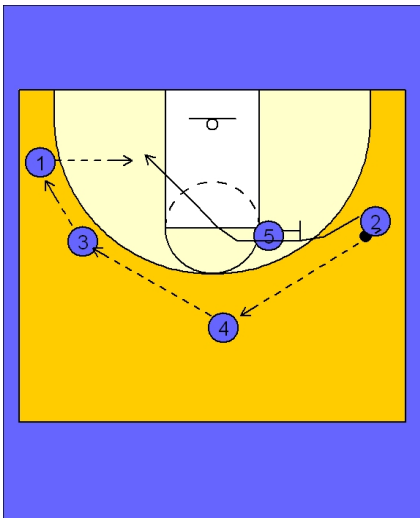


Connecticut Women Set Play vs. Man Defense

1 - 4 high set to begin.

#1 enters the ball to either wing. Here we see #1 passing to #2 on the right wing and cutting over the top of #5, down into the lane, and then out to the opposite corner area.

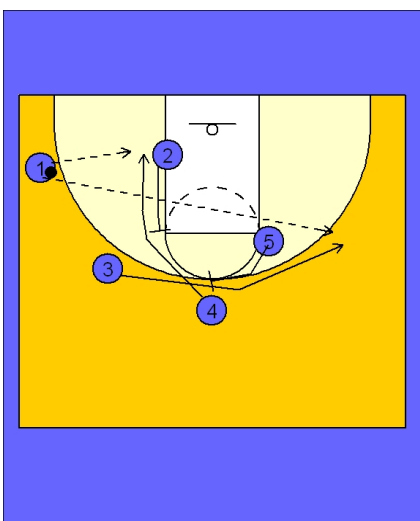
#4 steps out to the top of the key area.



Connecticut Women Set Play vs. Man Defense

#2 reverses the ball to #4 on top who then passes to #3 on the left wing who passes then to #1 in the corner area.

#5 steps out and back screens for #2, who cuts over the top and into the lane, looking for the pass from #1.



Connecticut Women Set Play vs. Man Defense

If #2 does not receive the pass, #2 will back screen for #4 cutting to the ball side low block.

At the same time, #5 is setting a flair screen for #3 who cuts across the top and out to the back side wing.

#1 will look to skip the ball to #3 if open.