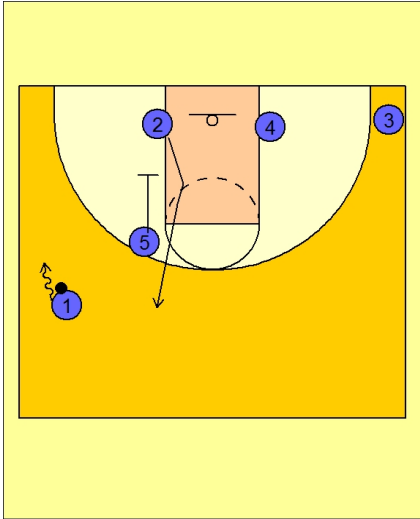




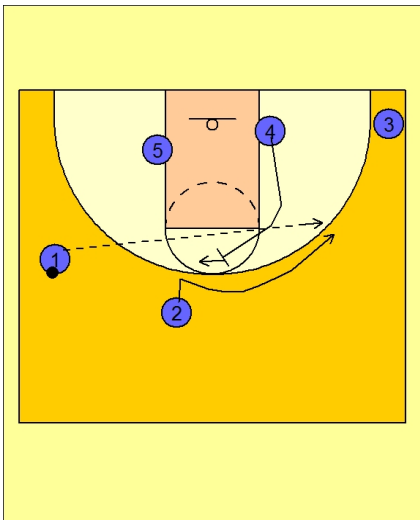
Set play (15)



Connecticut Women Set Play vs. Man Defense

#1 dribble drives to the left wing while #5 down screens for #2.

#2 pops up on top.

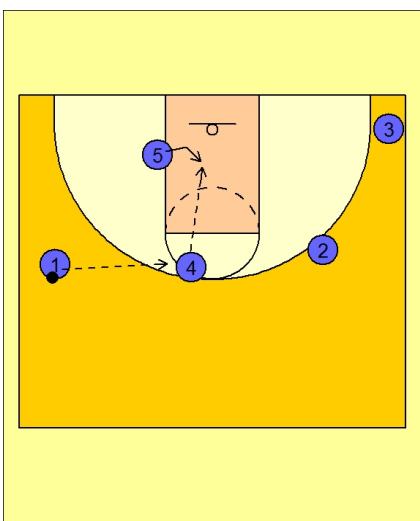


Connecticut Women Set Play vs. Man Defense

As soon as #2 cuts up on top, #4 is sprinting up to the top to set a back screen for #2.

#2 uses the screen from #4 and cuts over the top to the right side of the floor.

#1 looks to skip the ball to #2 if she is open.



Connecticut Women Set Play vs. Man Defense

If #2 is not open, #4 steps out after back screening and receives the pass from #1.

#5 ducks in the lane and #4 will look for #5 isolated inside.