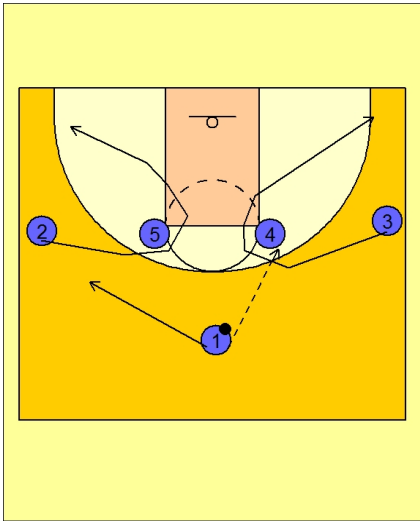




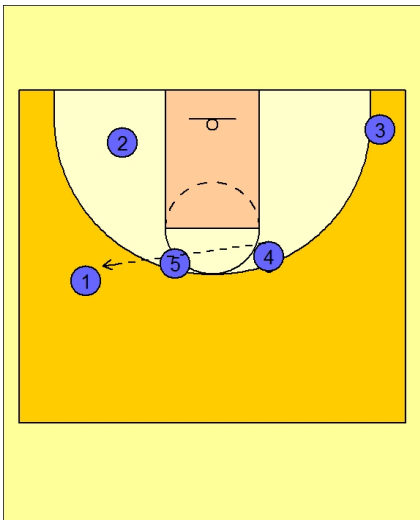
Set play (17)



Connecticut Women Set Play vs. Man Defense

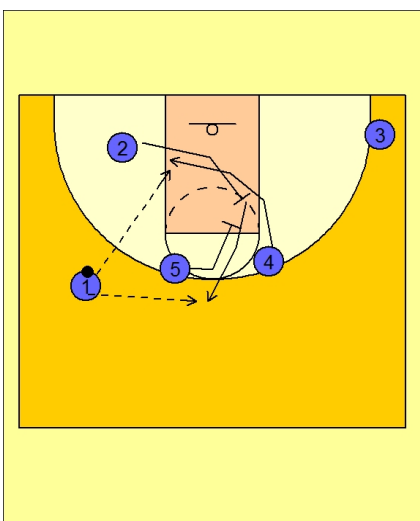
#2 and #3 start the play by curling over the top of each post player #4 and #5 and back out to their respective corner areas.

#1 enters the ball to either post and then cuts to the opposite wing area.



Connecticut Women Set Play vs. Man Defense

#4 then passes to #1.



Connecticut Women Set Play vs. Man Defense

On the catch, #2 is setting a back screen for #4 who cuts in the lane and to the ball side low block looking for the entry pass from #1.

#5 then down screens for #2 and completes the "pick the picker" action.

#1 can pass inside to #4 or #2 on top for the open jump shot.