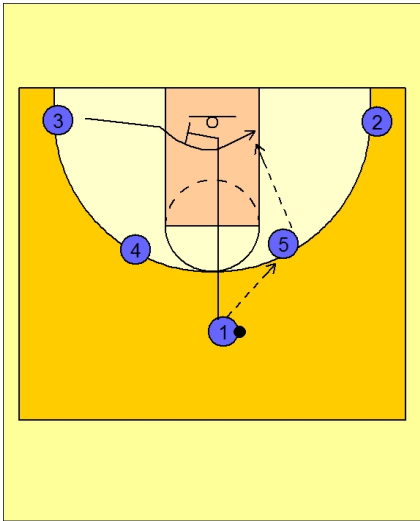




### Set play (18)



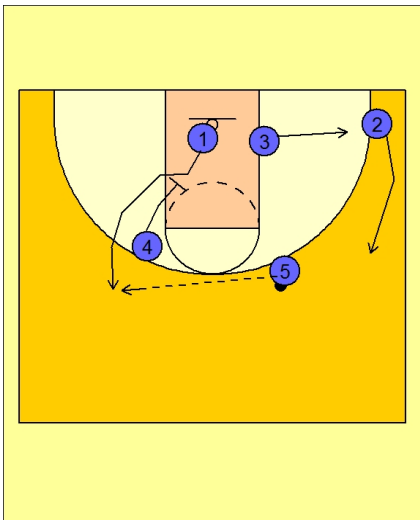
#### Connecticut Women Set Play vs. Man Defense

#1 enters the ball to either high post and cuts down the middle of the lane.

Here we see #1 passing to #5.

#1 cuts under the basket and then screens out for the opposite wing player #3.

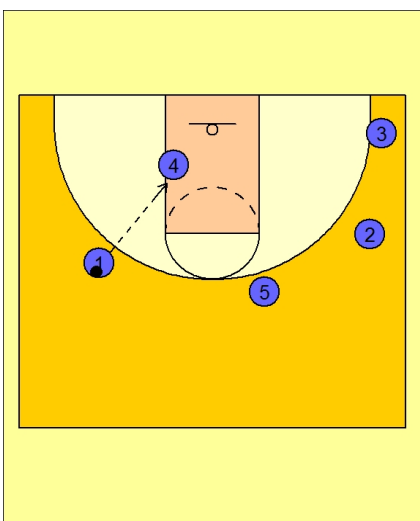
#5 looks to pass inside to #3 cutting over the top of the screen.



#### Connecticut Women Set Play vs. Man Defense

If #3 is not open, #4 sets a down screen for #1.

#5 looks to hit #1 on top for the open jump shot.



#### Connecticut Women Set Play vs. Man Defense

If #1 is not open for the shot, they have #4 isolated inside on the left low block.